

3 Attitude toward Child Rearing, etc.

(1) Burdens and worries about child rearing, and concerns and worries in children's daily life

The rate of “financial burdens” is the highest with any sibling composition.

With regards to burdens and worries about child rearing (multiple answers) by sibling composition, the rate of “financial burdens” is the highest with any sibling composition, followed by “lack of free time” with “only child” and with “younger sibling(s) only”; and by “cannot have sufficient time to spend with children” with “elder sibling(s) only” and with “both elder and younger siblings” (Table 4).

With regards to concerns and worries in children's daily life (multiple answers), the rate of “eating habit concerns (balance, volume, likes and dislikes etc.)” was the highest with “only child” and with “elder sibling(s) only”; “disobedience of the child” was the highest with “younger sibling(s) only”; and “use of vulgar language” was the highest with “both elder and younger siblings” (Table 5).

Table 4 Burdens and worries about child rearing according to the sibling composition (the top 5, multiple answers)

(Unit: %)

		Burdens and worries concerning child rearing (the top 5, multiple answers)									
		No. 1		No. 2		No. 3		No. 4		No. 5	
Without younger sibling	Only child	Financial burdens	29.5	Lack of free time	25.5	Cannot have sufficient time to spend with children	24.5	No tolerance toward the child	23.5	Feel difficulty in taking days off when children are sick etc.	17.3
	Elder sibling(s) only		37.0	Cannot have sufficient time to spend with children	22.6	Lack of free time	19.4		18.8		15.5
With younger sibling(s)	Younger sibling(s) only		39.8	Lack of free time	32.6	No tolerance toward the child	30.6	Cannot have sufficient time to spend with children	25.5	Physical burdens	20.9
	Both elder and younger siblings		40.5	Cannot have sufficient time to spend with children	26.7	Lack of free time	25.3	No tolerance toward the child	24.1		17.6

Notes: 1) The figures are based on the total number of responses in the 7th survey (total number of replies: 36,785).

2) “Burdens and worries about child rearing” was questioned with regards to the surveyed children.

Table 5 Concerns and worries in children's daily life by the sibling composition (the top 5, multiple answers)

(Unit: %)

		Concerns and worries in children's daily life (the top 5, multiple answers)									
		No. 1		No. 2		No. 3		No. 4		No. 5	
Without younger sibling	Only child	Eating habit concerns (balance, volume, likes and dislikes etc.)	26.4	Disobedience of the child	22.0	Use of vulgar language	20.7	Spend many hours watching TV and/or playing computer games	19.2	Do not keep promise / tell lies	17.9
	Elder sibling(s) only		23.6								
With younger sibling(s)	Younger sibling(s) only	Disobedience of the child	26.1	Disobedience of the child	20.9	Eating habit concerns (balance, volume, likes and dislikes etc.)	20.3	Do not keep promise / tell lies	19.6	Spend many hours watching TV and/or playing computer games	16.9
	Both elder and younger siblings	Use of vulgar language	24.4								

Notes: 1) The figures are based on the total number of responses in the 7th survey (total number of replies: 36,785).

2) “Concerns and worries in children's daily life” was questioned with regards to the surveyed children.!

(2) Child-Rearing Expenditures

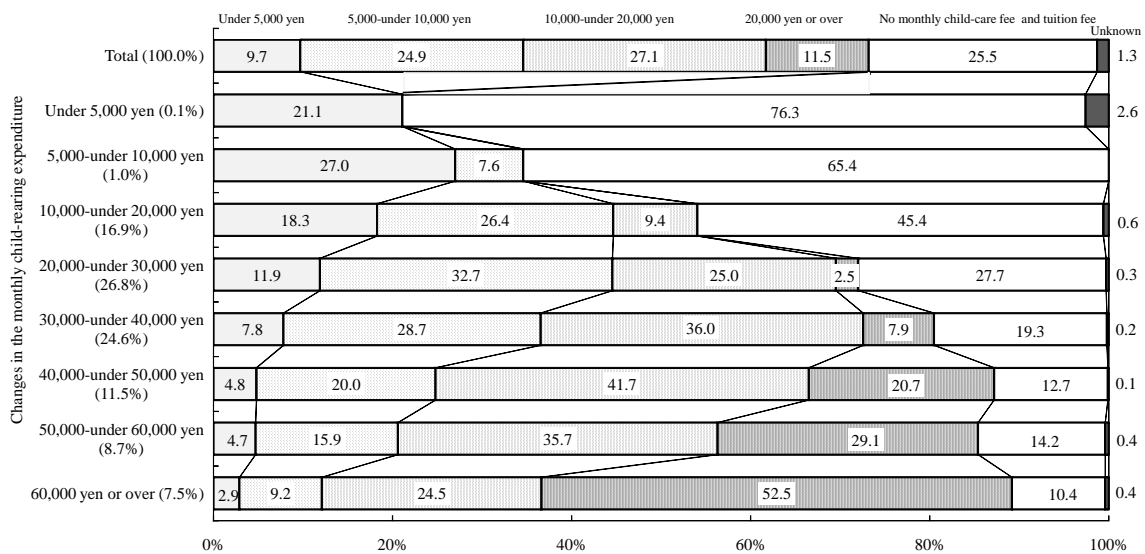
Expenditure on child rearing decreased, as children entered the elementary school, with “child-care fee and tuition fee” was replaced with “school expenses”.

In the breakdown of monthly expenses for lessons, the largest proportion was 27.1% for “10,000 yen to under 20,000 yen”, followed by 24.9% for “5,000 yen to under 10,000 yen”. According to this breakdown in relation to the monthly child-rearing expenditure, there is a tendency that the higher the child-rearing expenditure becomes, the larger the expenses for paid lessons become (Figure 19).

Comparing average monthly expenditure on child rearing between the 6th and 7th surveys, the amount was reduced from 48,000 yen in the 6th to 34,000 yen in the 7th survey.

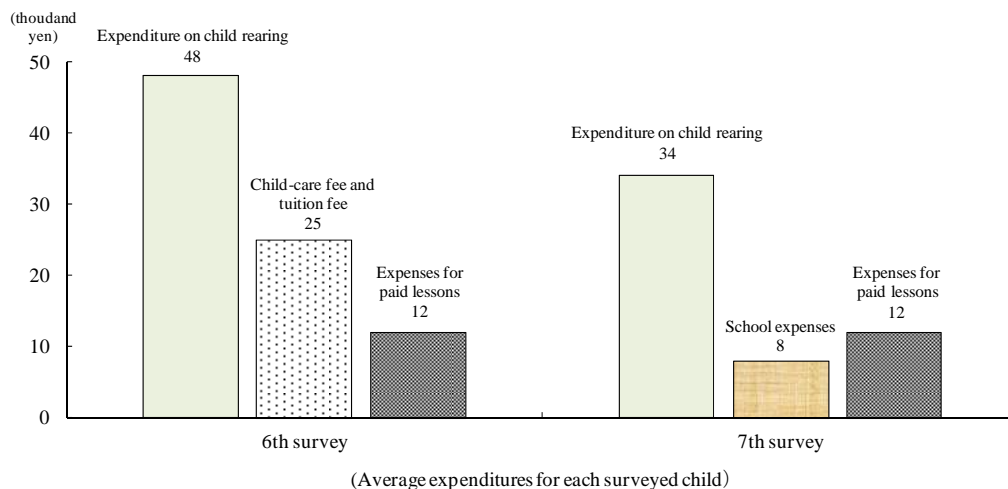
In the 7th survey, “school expenses” stood at 8,000 yen, and “expenses for paid lessons” at 12,000 yen (Figure 20).

Figure 19 Changes in the monthly child-rearing expenditure



Notes: 1) The figures are based on the total number of responses in the 7th survey. (total number of replies: 36,785).
2) Total total includes "Unknown" of monthly child-rearing expenditure.

Figure 20 Average monthly expenditure on child rearing, average monthly child-care fee and tuition fee, average monthly school expenses, and average monthly expenses for paid lessons etc.



Note: The figures are based on the total number of responses with children for whom the status of expenditures is as follows in the 6th and 7th surveys:
The 6th survey: The figures are based on the total number of responses "child-rearing expenditure" excluding "unknown" (total number of replies: 34,897), "child-care fee and tuition fee" excluding "no child-care fee and no tuition" and "unknown" (total number of replies: 33,804), and "expenses for paid lessons" excluding "no fee for lessons" and "unknown" (total number of replies: 19,661) respectively.
The 7th survey: The figures are based on the total number of responses "child-rearing expenditure" excluding "unknown" (total number of replies: 34,647), "school expenses" excluding "no school expenditure" and "unknown" (total number of replies: 34,060), and "expenses for paid lessons" excluding "no fee for lessons" and "unknown" (total number of replies: 26,195) respectively.