

## 2 Estimated rate of patients (per day, per 100,000 population)

The estimated rate of patients (per day, per 100,000 population) nationwide was 960 for "inpatients" and 5,658 for "outpatients."

### (1) By sex and age group

The estimated rate of patients (per day, per 100,000 population) by sex was 910 for "males" and 1,007 for "females" for inpatients, and 4,971 for "males" and 6,308 for "females" for outpatients. By age group, the rate was 2,512 for "65 and over", 2,899 for "70 and over", and 3,568 for "75 and over" for inpatients, and 10,044 for "65 and over", 10,665 for "70 and over", and 11,166 for "75 and over" for outpatients. (Table 4, Statistics Table 4).

**Table 4 Estimated Rate of Patients (per day, per 100,000 population) by Sex and Age Group**

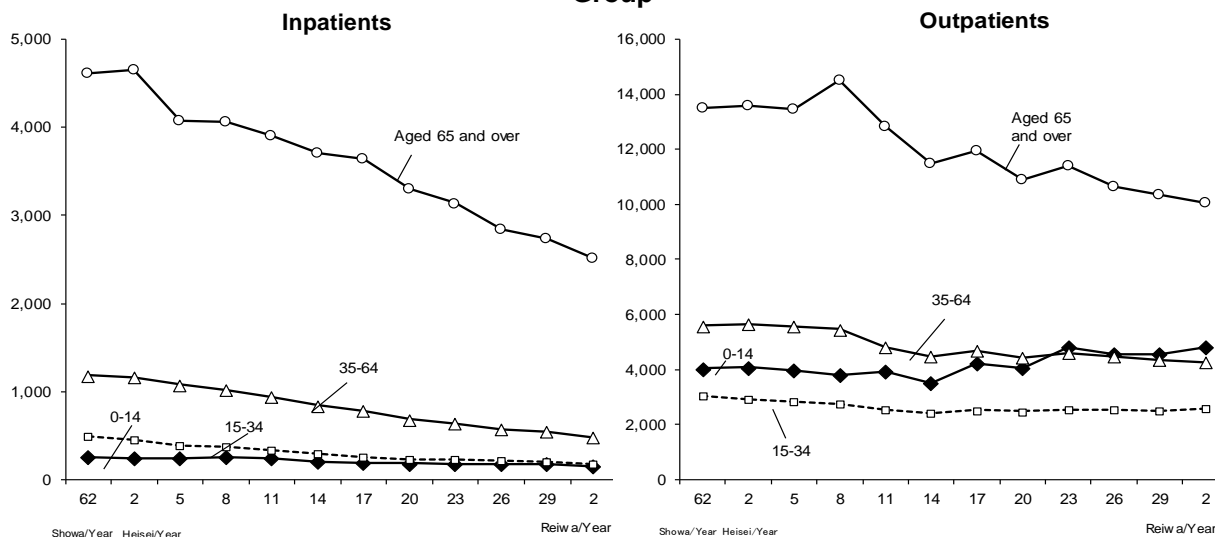
October 2020

Age group	Inpatients			Outpatients		
	Total	Male	Female	Total	Male	Female
Total	960	910	1 007	5 658	4 971	6 308
Age 0	1 065	1 155	971	7 296	7 403	7 185
1~4	134	153	115	6 327	6 540	6 103
5~9	71	79	64	4 816	5 078	4 540
10~14	99	106	92	3 313	3 300	3 328
15~19	123	121	126	2 178	1 993	2 372
20~24	141	128	156	2 321	1 782	2 885
25 ~ 29	198	142	258	2 692	1 867	3 563
30 ~ 34	246	165	331	3 043	2 149	3 977
35 ~ 39	257	215	301	3 174	2 300	4 074
40 ~ 44	273	278	267	3 480	2 760	4 220
45 ~ 49	345	387	302	3 745	3 063	4 444
50 ~ 54	478	551	404	4 285	3 602	4 977
55 ~ 59	664	776	551	5 113	4 368	5 856
60 ~ 64	895	1 064	730	6 113	5 509	6 702
65 ~ 69	1 207	1 444	983	7 951	7 369	8 500
70 ~ 74	1 544	1 797	1 318	9 649	9 165	10 083
75 ~ 79	2 204	2 461	1 997	11 527	11 132	11 843
80 ~ 84	3 234	3 440	3 088	11 847	12 077	11 685
85 ~ 89	4 634	4 795	4 546	10 728	11 308	10 411
Aged 90 and over	6 682	6 706	6 673	9 248	9 667	9 107
(Regrouped)						
Aged 65 and over	2 512	2 518	2 507	10 044	9 718	10 295
Aged 70 and over	2 899	2 887	2 907	10 665	10 525	10 766
Aged 75 and over	3 568	3 534	3 590	11 166	11 332	11 059

Note: Total includes patients of unknown age.

By age group, the estimated rate of patients (per day, per 100,000 population) was the highest in the "65 and over" age group for both inpatients and outpatients. However, the yearly trend showed a downward trend (Figure 5, Statistical Table 4).

**Figure 5 Yearly Trend in the Estimated Rate of Patients (per day, per 100,000 population) by Age Group**



Note: 1) Figures of 2011 exclude data of Fukushima Prefecture and the medical areas of Ishinomaki and Kesenuma in Miyagi Prefecture. 2) For figures, see Statistics Table 4.

## (2) By classification of injury/disease

By classification of injury/disease, the highest rate for inpatients was "V Mental and behavioral disorders" (188), followed by "IX Diseases of the circulatory system" (157), and "X IX Injury, poisoning and certain other consequences of external causes" (107). Regarding the estimated number of outpatients, the most common categories, ranked highest to lowest, are: "XI Diseases of the digestive system" (1,007), "XXI Factors influencing health status and contact with health services" (794) and "XIII Diseases of the musculoskeletal system and connective tissue" (718). (Table 5, Statistics Table 5)

**Table 5 Estimated Rate of Patients (per day, per 100,000 population) by Classification of Injury/Disease**

October 2020

Classification of injury/disease	Inpatients			Outpatients		
	Total	Male	Female	Total	Male	Female
Total	960	910	1 007	5 658	4 971	6 308
I Certain infectious and parasitic diseases	13	13	13	103	96	110
Tuberculosis (Regrouped)	2	2	1	1	1	1
Viral hepatitis (Regrouped)	0	0	0	7	7	8
II Neoplasms (tumor)	100	115	87	196	178	212
Malignant neoplasms (tumor) (Regrouped)	89	106	74	144	148	141
Malignant neoplasm of stomach (tumor) (Regrouped)	8	11	5	13	17	9
Malignant neoplasm of colon and rectosigmoid junction and rectum (tumor) (Regrouped)	14	16	12	21	24	19
Malignant neoplasm of liver and intrahepatic bile ducts (tumor) (Regrouped)	4	5	2	3	5	2
Malignant neoplasm of trachea, bronchus and lung (tumor) (Regrouped)	13	17	8	15	19	11
Malignant neoplasm of breast (tumor) (Regrouped)	4	0	8	28	1	53
III Diseases of the blood and blood-forming organs and certain disorders involving the immune mechanism	4	4	5	14	8	20
IV Endocrine, nutritional and metabolic diseases	24	21	26	343	312	373
Diabetes mellitus (Regrouped)	12	12	12	170	199	143
Dyslipidemia (Regrouped)	0	0	0	122	76	165
V Mental and behavioral disorders	188	185	190	211	198	224
Vascular and unspecified dementia (Regrouped)	20	17	23	11	6	15
Schizophrenia, schizotypal and delusional disorders (Regrouped)	113	112	114	40	42	38
Mood [affective] disorders (including bipolar affective disorder) (Regrouped)	22	16	28	72	61	83
VI Diseases of the nervous system	100	88	111	131	115	147
Alzheimer disease (Regrouped)	40	28	51	36	18	53
VII Diseases of the eye and adnexa	8	7	9	237	192	279
VIII Diseases of the ear and mastoid process	2	1	2	76	68	83
IX Diseases of the circulatory system	157	151	163	652	609	693
Hypertensive diseases (Regrouped)	4	2	5	471	418	522
Heart diseases (excluding hypertensive) (Regrouped)	46	44	48	103	112	94
Cerebrovascular diseases (Regrouped)	98	94	101	59	61	57
X Diseases of the respiratory system	59	69	50	371	363	379
Pneumonia (Regrouped)	19	21	17	3	4	3
Chronic obstructive pulmonary disease (Regrouped)	5	7	3	12	18	7
Asthma (Regrouped)	1	1	2	71	67	75
X I Diseases of the digestive system	48	53	43	1 007	870	1 137
Dental caries (Regrouped)	0	0	0	231	208	252
Gingivitis and periodontal diseases (Regrouped)	0	0	0	401	319	478
Diseases of liver (Regrouped)	5	6	4	20	22	18
X II Diseases of the skin and subcutaneous tissue	9	9	10	247	225	268
X III Diseases of the musculoskeletal system and connective tissue	59	46	71	718	556	872
X IV Diseases of the genitourinary system	41	40	41	241	232	250
Chronic kidney diseases (Regrouped)	18	21	16	99	134	65
X V Pregnancy, childbirth and the puerperium	11	.	22	10	.	20
X VI Certain conditions originating in the perinatal period	5	6	4	3	3	2
X VII Congenital malformations, deformations and chromosomal abnormalities	4	5	4	11	10	11
X VIII Symptoms, signs and abnormal clinical and laboratory findings, not elsewhere classified	10	8	12	59	48	69
X IX Injury, poisoning and certain other consequences of external causes	107	80	132	229	233	225
Fracture (Regrouped)	77	45	108	77	62	91
X X I Factors influencing health status and contact with health services	8	6	10	794	650	930
X X II Codes for special purposes	2	3	2	3	4	3

### (3) By prefecture

By prefecture (place of residence of patient), the highest rate for inpatients was "Kochi" at 1,897, followed by "Kagoshima" at 1,810, and "Nagasaki" at 1,679. "Kanagawa" had the lowest rate at 654, followed by "Tokyo" at 669, and "Aichi" at 695.

As for the outpatients, "Kagawa" had the highest rate at 6,729, followed by "Saga" at 6,599, and "Yamagata" at 6,353. "Okinawa" had the lowest rate at 4,393, followed by "Ishikawa" at 4,656, and "Chiba" at 4,829. (Figure 6)

**Figure 6 Estimated Rate of Patients (per day, per 100,000 population) by Prefecture (Place of Residence of Patient)**  
October 2020

