

2 Estimated rate of patients (per day, per 100,000 population)

The estimated rate of patients (per day, per 100,000 population) in nationwide was 1,036 for "inpatients" and 5,675 for "outpatients."

(1) By sex and age group

The estimated rate of patients (per day, per 100,000 population) by sex was 972 for "males" and 1,096 for "females" for inpatients, and 4,953 for "males" and 6,360 for "females" for outpatients. By age group, the rate was 2,734 for "65 and over" and 3,997 for "75 and over" for inpatients, and 10,369 for "65 and over" and 11,899 for "75 and over" for outpatients (Table 4, Statistical Table 4).

Table 4 Estimated Rate of Patients (per day, per 100,000 population) by Sex and Age Group

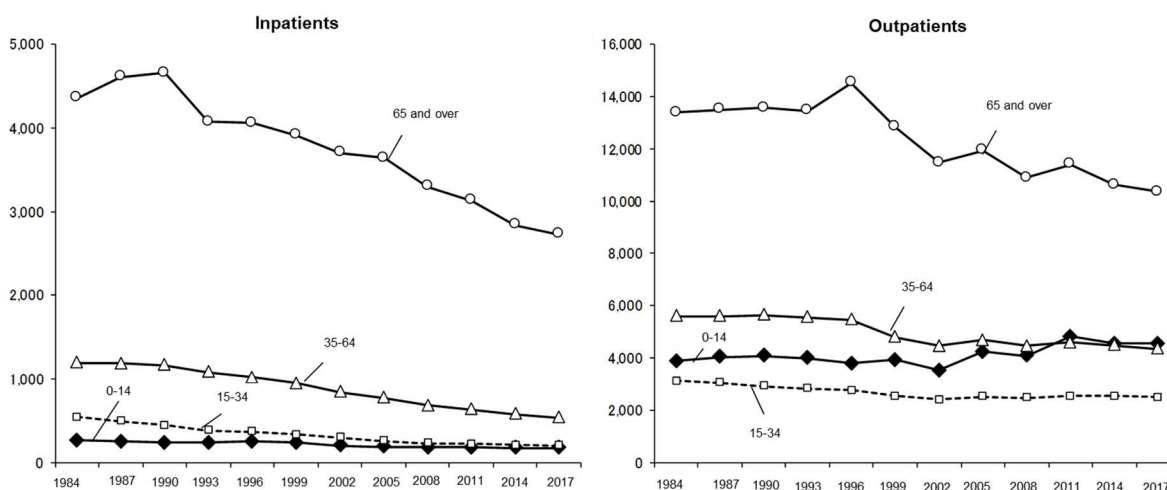
Age group	Inpatients			Outpatients		
	Total	Male	Female	Total	Male	Female
Total	1 036	972	1 096	5 675	4 953	6 360
Aged 0	1 167	1 208	1 124	7 276	7 439	7 105
1-4	169	191	146	6 517	6 670	6 354
5-9	86	94	77	4 377	4 495	4 253
10-14	94	100	86	2 764	2 899	2 623
15-19	113	116	110	1 923	1 734	2 123
20-24	158	134	182	2 108	1 599	2 648
25-29	235	159	314	2 751	1 882	3 663
30-34	291	199	385	3 104	2 104	4 138
35-39	296	248	346	3 203	2 260	4 173
40-44	311	327	296	3 362	2 668	4 075
45-49	398	442	354	3 782	3 072	4 507
50-54	552	628	475	4 481	3 802	5 167
55-59	758	888	628	5 233	4 464	5 998
60-64	997	1 188	811	6 279	5 710	6 832
65-69	1 305	1 560	1 067	7 824	7 297	8 317
70-74	1 712	2 002	1 457	10 174	9 661	10 626
75-79	2 448	2 715	2 233	12 123	11 764	12 410
80-84	3 633	3 818	3 505	12 551	12 745	12 414
85-89	5 326	5 409	5 285	11 608	12 075	11 368
90 and over	7 815	7 433	7 936	9 968	10 339	9 850
(Regrouped)						
65 and over	2 734	2 699	2 760	10 369	9 977	10 670
75 and over	3 997	3 868	4 080	11 899	12 023	11 820

October 2017

Note: Total includes patients of unknown age.

By age group, the estimated rate of patients (per day, per 100,000 population) was the highest in the "65 and over" age group for both inpatients and outpatients. However, the yearly trend showed a downward trend (Figure 5, Statistical Table 4).

Figure 5 Yearly Trend in the Estimated Rate of Patients (per day, per 100,000 population) by Age Group



Note: 1) Figures of 2011 exclude data of Ishinomaki medical area and Kesenuma medical area of Miyagi Prefecture and Fukushima Prefecture.

2) For figures, see Statistical Table 4.

(2) By classification of injury/disease

By classification of injury/disease, the highest rate for inpatients was "V Mental and behavioral disorders" (199), followed by "IX Diseases of the circulatory system" (180), and "II Neoplasms" (112). As for the outpatients, "XI Diseases of the digestive system" were the highest (1,021), followed by "IX Diseases of the circulatory system" (702), and "XIII Diseases of the musculoskeletal system and connective tissue" (692). (Table 5, Statistical Table 5)

Table 5 Estimated Rate of Patients (per day, per 100,000 population) by Classification of Injury/Disease

October 2017							
Classification of injuries/diseases		Inpatients			Outpatients		
		Total	Male	Female	Total	Male	Female
Total		1 036	972	1 096	5 675	4 953	6 360
I	Certain infectious and parasitic diseases	16	16	16	134	126	141
	Tuberculosis (Regrouped)	2	3	2	1	1	1
	Viral hepatitis (Regrouped)	1	1	1	14	14	14
II	Neoplasms	112	130	95	197	189	204
	Malignant neoplasms (Regrouped)	100	119	81	145	158	132
	Malignant neoplasm of stomach (Regrouped)	10	14	6	16	22	9
	Malignant neoplasm of colon and rectosigmoid junction and rectum (Regrouped)	15	17	13	23	28	19
	Malignant neoplasm of liver and intrahepatic bile ducts (Regrouped)	5	7	3	4	6	3
	Malignant neoplasm of trachea, bronchus and lung (Regrouped)	14	20	9	13	17	10
	Malignant neoplasm of breast (Regrouped)	4	0	9	22	1	42
III	Diseases of the blood and blood-forming organs and certain disorders involving the immune mechanism	5	4	5	17	9	24
IV	Endocrine, nutritional and metabolic diseases	26	23	29	350	309	388
	Diabetes mellitus (Regrouped)	15	15	15	177	203	152
	Dyslipidemia (Regrouped)	0	0	0	117	70	161
V	Mental and behavioral disorders	199	197	201	206	194	217
	Vascular and unspecified dementia (Regrouped)	22	17	26	9	6	12
	Schizophrenia, schizotypal and delusional disorders (Regrouped)	121	121	121	49	53	46
	Mood [affective] disorders (including bipolar affective disorder) (Regrouped)	24	18	29	71	60	81
VI	Diseases of the nervous system	100	86	113	130	108	151
	Alzheimer disease (Regrouped)	39	26	51	37	19	54
VII	Diseases of the eye and adnexa	9	8	10	283	217	345
VIII	Diseases of the ear and mastoid process	2	2	2	78	66	90
IX	Diseases of the circulatory system	180	169	192	702	644	756
	Hypertensive diseases (Regrouped)	4	3	6	511	439	578
	Heart diseases (excluding hypertensive) (Regrouped)	50	48	53	106	117	95
	Cerebrovascular diseases (Regrouped)	115	106	124	68	71	65
X	Diseases of the respiratory system	76	83	69	497	479	514
	Pneumonia (Regrouped)	28	30	27	6	7	5
	Chronic obstructive pulmonary disease (Regrouped)	6	8	5	14	19	9
	Asthma (Regrouped)	3	2	3	96	90	101
XI	Diseases of the digestive system	52	57	47	1 021	890	1 144
	Dental caries (Regrouped)	0	0	0	219	194	242
	Gingivitis and periodontal diseases (Regrouped)	0	0	0	370	308	429
	Diseases of liver (Regrouped)	6	6	5	21	23	20
XII	Diseases of the skin and subcutaneous tissue	9	8	10	240	215	263
XIII	Diseases of the musculoskeletal system and connective tissue	56	43	69	692	522	853
XIV	Diseases of the genitourinary system	40	39	41	254	242	265
	Chronic kidney disease (Regrouped)	19	21	17	113	150	78
XV	Pregnancy, childbirth and the puerperium	14	.	28	12	.	23
XVI	Certain conditions originating in the perinatal period	6	6	5	2	3	2
XVII	Congenital malformations, deformations and chromosomal abnormalities	4	5	4	11	11	11
XVIII	Symptoms, signs and abnormal clinical and laboratory findings, not elsewhere classified	11	9	14	62	52	72
XIX	Injury, poisoning and certain other consequences of external causes	109	82	134	236	233	238
	Fracture (Regrouped)	77	45	108	78	65	90
XXI	Factors influencing health status and contact with health services	10	6	12	553	443	656

(3) By prefecture

By prefecture (place of residence of patient), the highest rate for inpatients was "Kochi" at 2,101, followed by "Kagoshima" at 1,880, and Nagasaki at 1,803. "Kanagawa" had the lowest rate at 706, followed by "Tokyo" at 745, and "Saitama" at 753.

As for the outpatients, "Saga" had the highest rate at 7,115, followed by "Kagawa" at 6,952, and "Nagasaki" at 6,812. "Okinawa" had the lowest rate at 4,586, followed by "Kyoto" at 5,014, and "Nagano" at 5,033. (Figure 6)

Figure 6 Estimated Rate of Patients (per day, per 100,000 population) by Prefecture (Place of Residence of Patient)

October 2017

