

Material for the 10th ASEAN & Japan High Level Officials Meeting

The Great East Japan Earthquake and Mentally Disabled People

What We Saw during Support for the Disaster Areas



Masahiro Tanaka, Inclusion Japan

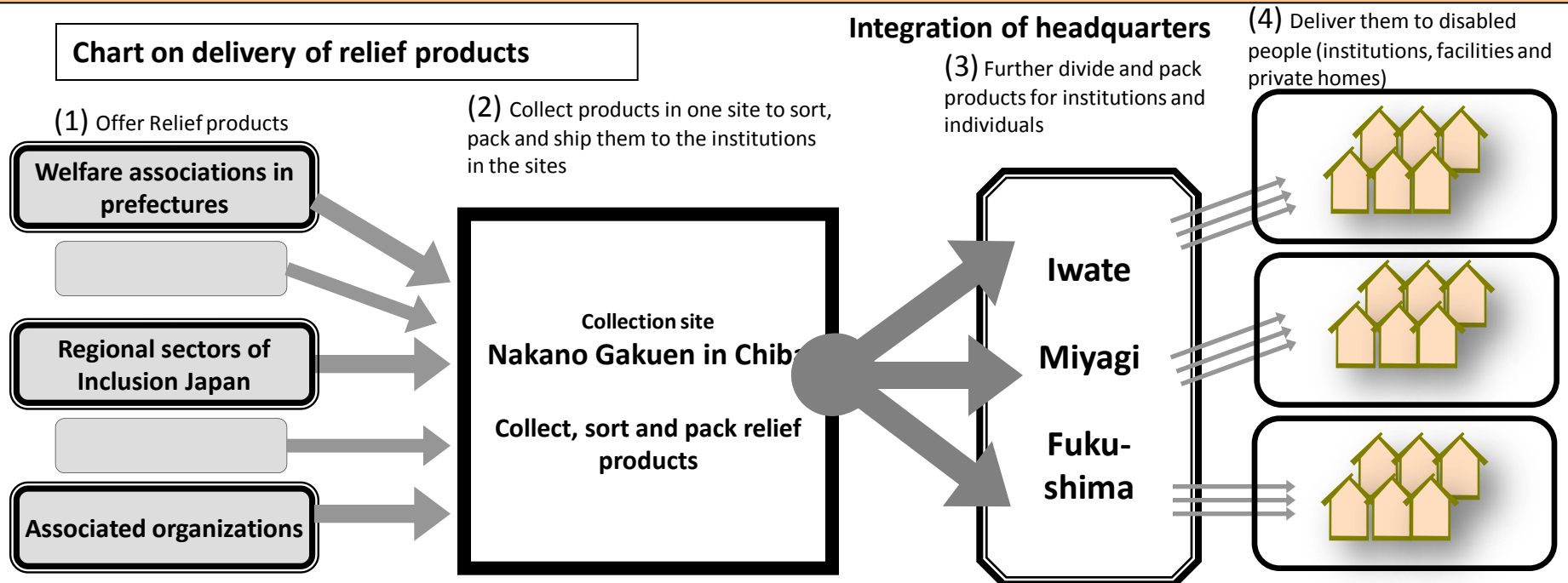
“Disaster Management Liaison Council of Organizations for Mentally and Developmentally Disabled Children and People”

Japanese Association on Intellectual Disability, Inclusion Japan, Nationwide Association for Children (Persons) with Severe Physical and Intellectual Disabilities, Zenshiren, Nationwide Network for Community Life Support, Japan Developmental Disorders Network (JDD Net), Nihon Group Home Gakkai, The Council of Developmental Support Center Japan, Nihon Soudanshien Senmonin Kyoukai, and Japan National Council of Social Welfare

*Random order

Headquarters for “Disaster Management Liaison Council of Organizations for Mentally and Developmentally Disabled Children and People” in the Three Prefectures of Tohoku Area

Chart on delivery of relief products



Situation of the Secretariat Immediately after the Great East Japan Earthquake (Miyagi Division of Inclusion Japan)

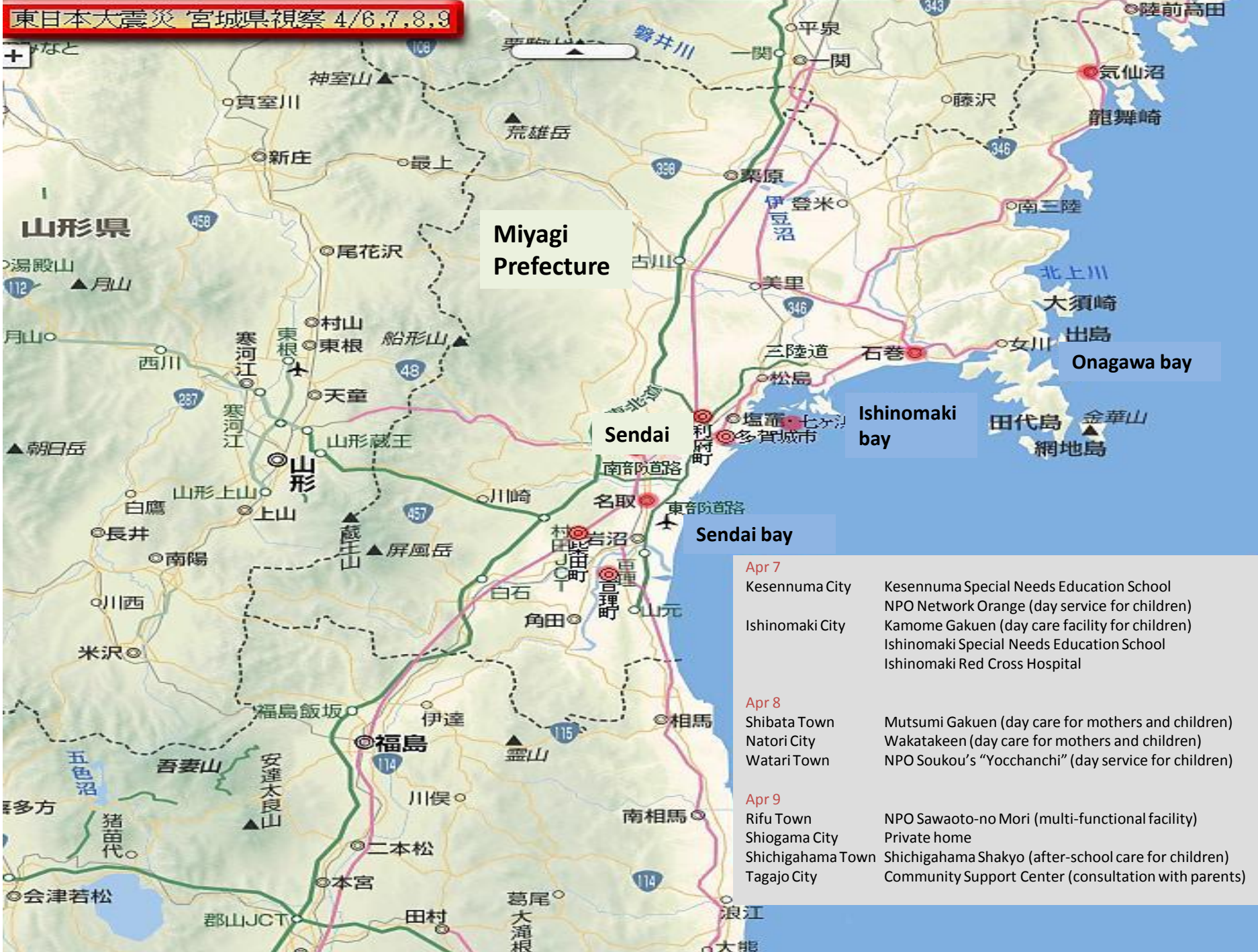
On Mar 11, the earthquake happened when two people were engaged in administrative works in the secretariat

- Electricity, water, gas and telephone stopped immediately after
Mobile phone was difficult to get a connection for and then down after five minutes
Mobile text was possible to send for about 15 min but then disconnected until night
- They went home late afternoon due to strong intermittent afterquakes
Electricity came back three days later in the secretariat and five days later at home
Water supply resumed about one week later and gas about three weeks later

From Mar 13, we visited the secretariat and affected coastal areas nearby

- Safety confirmation with chairs of Municipal sectors of Inclusion Japan
→ Communications were mostly down
- Visited affected coastal areas nearby
Confirmed the status of the fully destroyed facility in Natori
→ Visited the evacuation center
Confirmed safety of all the members
Visited high schools with dormitories and confirmed the conditions
Continued an attempt to confirm safety
→ Conditions of all the regions were confirmed after the holidays in May

東日本大震災 宮城県視察 4/6,7,8,9



Miyagi Prefecture

Sendai

Ishinomaki bay

Sendai bay

- Apr 7**

 - Kesennuma City: Kesennuma Special Needs Education School, NPO Network Orange (day service for children)
 - Ishinomaki City: Kamome Gakuen (day care facility for children), Ishinomaki Special Needs Education School, Ishinomaki Red Cross Hospital
- Apr 8**

 - Shibata Town: Mutsumi Gakuen (day care for mothers and children)
 - Natori City: Wakatakeen (day care for mothers and children)
 - Watari Town: NPO Soukou's "Yocchanchi" (day service for children)
- Apr 9**

 - Rifu Town: NPO Sawaoto-no Mori (multi-functional facility)
 - Shiogama City: Private home
 - Shichigahama Town: Shichigahama Shakyo (after-school care for children)
 - Tagajo City: Community Support Center (consultation with parents)

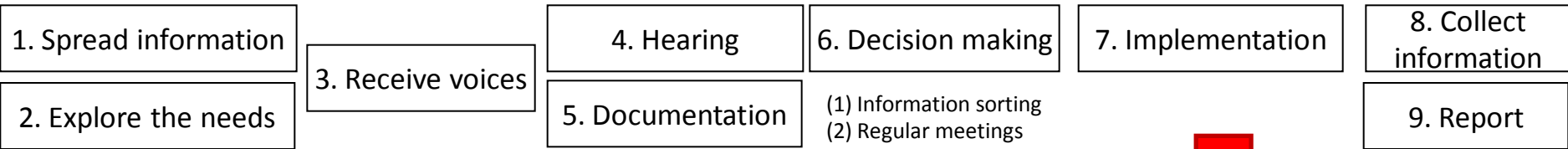
Establishment of Miyagi Headquarters for Disaster Management Liaison Council of Organizations for Mentally and Developmentally Disabled Children and People

On Apr 8, Miyagi Headquarters was established to initiate cooperation of regional organizations

- Mr. Masahiro Tanaka was sent from the central Disaster Management Liaison Council to coordinate efforts among organizations and policies for supports in the affected areas, and we started collaboration of organizations in Miyagi Prefecture



The established Headquarters tried to clarify the situations by having a general meeting twice a week and made full efforts for problem solutions. Confirmed the statuses of institutions in the prefecture and visited them if we couldn't communicate with them.



Types of supports they need

- A. Dispatch of staff B. Life support C. Material support D. Institution management E. Others

Employees were sent from Inclusion Japan to establish Miyagi Suboffice and start safety confirmation of each home

Started full-fledged activities of Inclusion Japan

- The Headquarters was mainly engaged in confirming the statuses of institutions and it was difficult for them to confirm safety of disabled children and people who stayed home, so “Miyagi Suboffice” started its activity by filling this gap.



We confirmed daily activities in daily morning meeting, called each home to confirm safety and repeatedly visited their homes if we could not contact them



Establishment of Comprehensive Consultation Service during Emergency

Consultation service

Local consultation services +
Consultation support workers
from other prefectures

Nursing support

Facilities commissioned
for the nursing support
project + JDD, etc.

Special needs education

Special needs education
coordinator

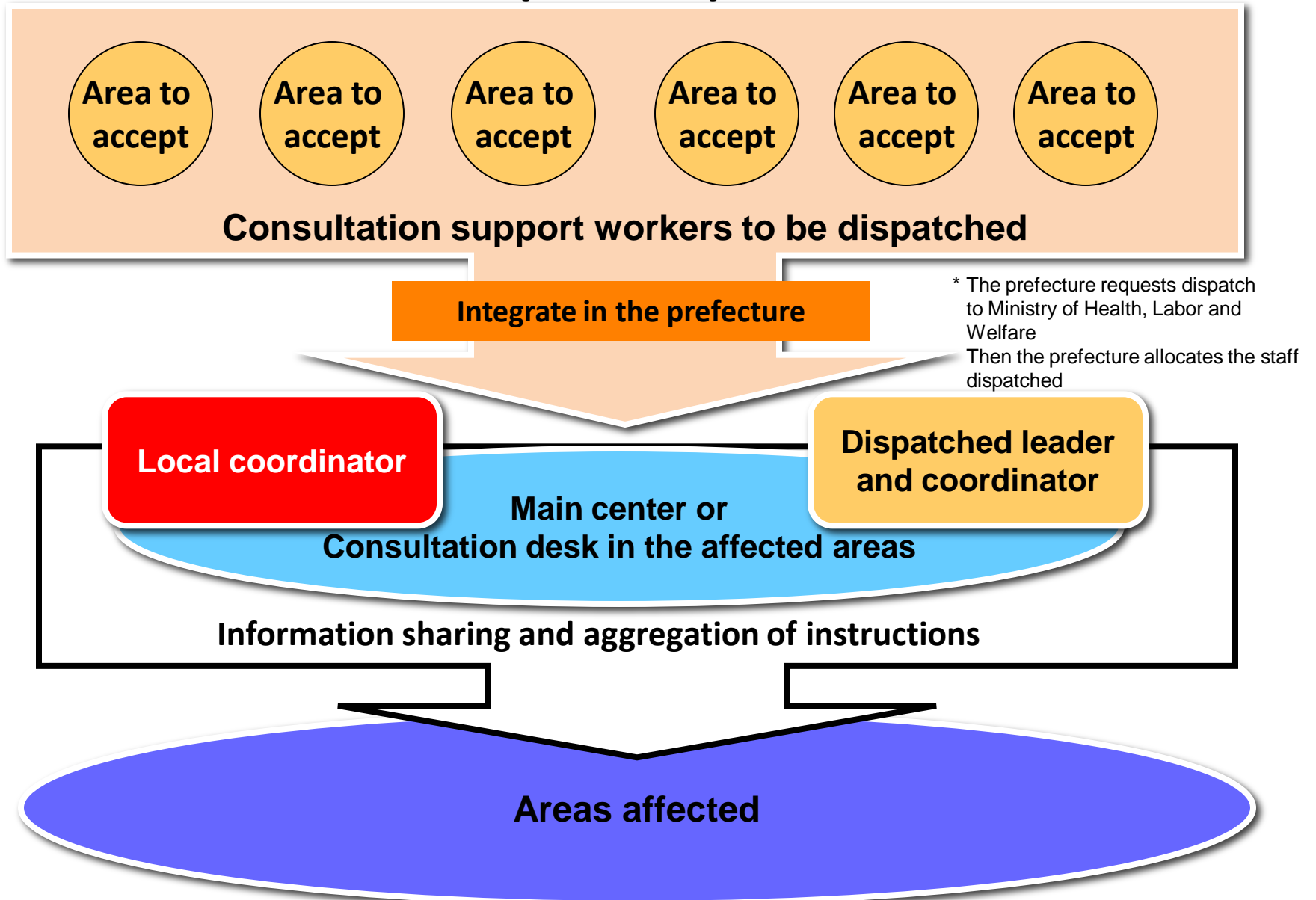
Peer support

Inclusion Japan, Zenshiren,
Association for Children
with Severe Physical and
Intellectual Disabilities

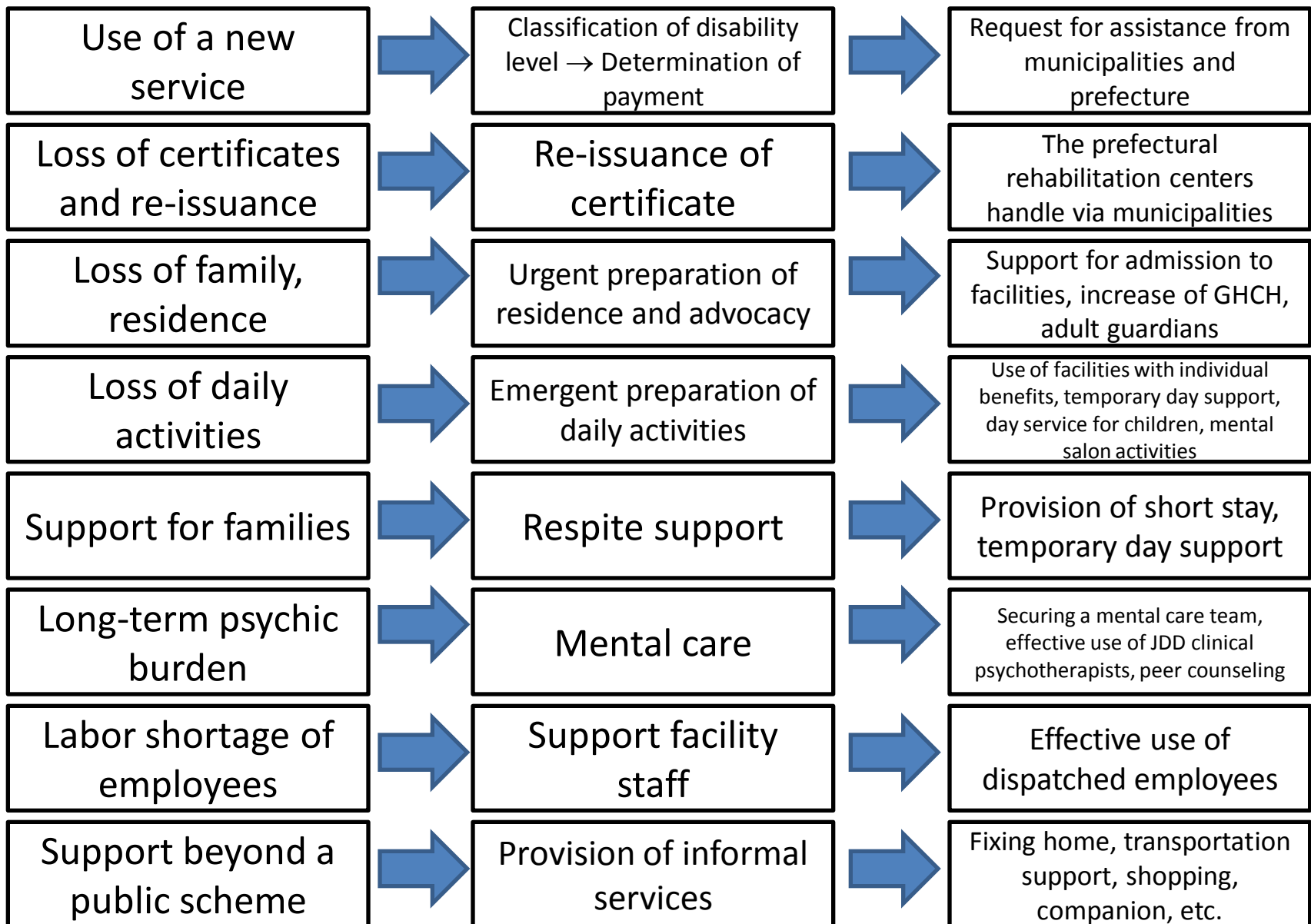
Coordination of service

Direct support (offer a range of services)
In-home/respite service, etc.

System to Accept Consultation Support Workers (Process)



Offering a Range of Services



Condition of the affected area (May 2011)



Downtown area, Minamisanriku Town

Condition of the affected area (May 2011)



Gamo Area, Sendai City

Condition of the affected area (Apr 2011)



Yamamoto Town



Trace of the disaster (Ishinomaki City)





The ship stranded onto the land (Ishinomaki City)





Health and Welfare Center in Minamisanriku Town



A view looked back from the Health and Welfare Center



Madoka, facility completely destroyed by Tsunami



Rubato, completely destroyed facility



地域活動支援センター 更生施設

らごるぱーと



Condition of the affected area (May 2011)



Group home and working space
affected by the disaster
(Tagajo City)

Visit of Members' Homes

Visited the chair of each regional sector, together with an employee of the Prefectural secretariat of Inclusion Japan.

We heard the local situations and whereabouts of members we felt particularly concern about, and received the list of members (list was developed based on memory, etc. if it was lost)



We visited members' homes based on the list.

We heard about their life and problems to help provide assistance needed.

Membership list of Te wo tsunagu Parents' Association in Onagawa-cho

Father's name	Mother's name	Child's name	Child's date of birth	Address	TEL	Current condition	Note
			1/3/1962			Uminekoen	
			8/18/1973			Uminekoen	Stay at Takahashi's place
			1/2/1972			Daini Hitakamien	
			4/9/1975			Uminekoen	
			3/6/1965			Yamahei shokuhin	
			4/10/1969			Uminekoen	Home
			8/12/1971			Uminekoen	
			10/4/1973				Home
			9/24/1977			Kaneyoshi	Unknown
			11/1/1977			Daini Hitakamien	Daini Hitakamien
			4/30/1984				Youth center
			1/22/1982			Uminekoen	Unknown
			8/5/1979			Ishinomaki Special needs Education School (the third year of high school)	Home *supported by the Youth center
			1/12/1989			Uminekoen	Home
			6/17/1979			Uminekoen	Home
			2/18/1986			Daini Hitakamien	Daini Hitakamien
			11/26/1984			Uminekoen	
							Onagawa high school

Assistance for Facilities

We visited facilities for mentally disabled people to learn their situations.

Information was shared in the Disaster Management Liaison Council made of eleven organizations, to cooperate to offer assistance needed.

(An ambulatory facility in Iwanuma City, Miyagi. The farm where they had day activities was covered by sludge.)



Assisting employees were dispatched mainly to small facilities where not enough support was provided.

(Farm work together with users of a facility in Yamamoto Town, Miyagi)

Activities to Support the Affected Areas with Other Divisions of Inclusion Japan

Offered a variety of support activities for the affected areas together with employees dispatched from other divisions of Inclusion Japan

- Special events were organized with cooperation of many people and financial support from Nippon Foundation. Sport and music events were held so families could enjoy even only one day, as they were exhausted by caring disabled children while their schools were closed for a long period. Also organized a Rakuten bus tour.



Yamamoto Special Needs Education School



Kesenuma Special Needs Education School



Ishinomaki Special Needs Education School



Greenpia Iwanuma



Iwanuma Civic Hall

Activities to Support the Affected Areas with Other Divisions of Inclusion Japan



Salsagumtape

The two-days event held in “Iwanuma Civic Hall” was joined by about 600 people, including residents of the temporary houses nearby. Tetsu Kashiwa invited his friends and created excitement in the event, and he also holds concerts from summer to autumn this year as well!!



Activities to Support the Affected Areas with Other Divisions of Inclusion Japan



We prepared new works and dispatched instruction staff to completely destroyed “Nozomi Welfare Working Center” in Minamisanriku Town. Although they used to make papers by hand, a paper pressing machine was donated and now paper making is the major job of this center.



Miyagi Division of Inclusion Japan Started Activities to Support the Affected Areas

From Nov last year, our activities receive the earthquake-related national grant as “the Project to Develop a Structure of Mutual Support in the Community” with assistance from Miyagi Prefecture. We performed personnel training, mental care group work, dispatch of clinical psychotherapists to individuals, symposium with peer supporters and other trainings mainly in Minamisanriku Town, and organized “Community Welfare Forum” in Mar.



This group work triggered creation of a bond among people, necessary for them to continue living in the affected area.



Miyagi Division of Inclusion Japan Started Activities to Support the Affected Areas



In “Community Welfare Forum in Miyagi,” we requested people who offered welfare services in a variety of forms as we were definitely willing to hear their speeches. They shared their initiatives with us.



Miyagi Division of Inclusion Japan Started Activities to Support the Affected Areas



Starting from last summer, “Kids Club” cares disabled children in Minamisanriku Town during children’s long vacations. It was managed by Miyagi Division of Inclusion Japan from the winter vacation, operating “Winter Vacation Kids’ Club” and “Spring Vacation Kids’ Club.” During this summer vacation, two employees were dispatched from Tokyo Division, while “Summer Vacation Kids’ Club” was offered every weekday and Saturday together with employees of Miyagi Division of Inclusion Japan. We plan to continue the service as the formal and legally compliant one.

Takarazuka Division of Inclusion Japan contributed a large sum of donations for this activity.



What I felt from the current situations of the affected areas and support for them

Along the coast hit by Tsunami, many municipalities have problems for choosing a relocation site and they still do not have plans to relocate their populations to an upland. When we think if “they can start a life in a restored house in one year,” that is difficult in reality. Nevertheless, they “still want to continue living in the area,” and they are currently discussing how disabled people should live with their families in the community and what they can do to make the community more comfortable.

In a questionnaire in one region, more than half of the respondents answered that they were “disturbed with bias,” and they wished “people would better understand about their disabled children in the community.” Some also answered that they wanted “their children to participate in local events” and “to live in the community they were brought up.” All of these show many people still have low understanding about disabled people and it remains difficult for disabled people to live in the community, while social resources are limited.

It was the same in evacuation centers. Many people said their “family could not live in an evacuation center” and they “couldn’t go to an evacuation center in order to avoid bothering other people.”



At last...

What I felt with the support for the affected areas

Miyagi Division of Inclusion Japan currently provides personal support on one hand, while developing the foundation of welfare in the affected areas together with coordinators of other divisions of Inclusion Japan on the other hand. Their purpose is not

restoring what are lost

but achieving a “society where disabled people and their families can fulfill their lives in the community” and “rich welfare in the community” by making even a step or two forward to improve the situation, with the support from advisors in Tokyo, Niigata, Iwate and Miyagi to the affected areas.

We should always act by thinking about how we'd like to live in the community and how we can change the community, instead of noticing them only after a disaster.

