



# Employment Services of Public Employment Security Offices in JAPAN

~ **“Hello-Work”** : a Nationwide Network  
for Employers and job seekers ~

**October, 1, 2014**



# Roles of Public Employment Security Offices

- Public Employment Security Offices (PESOs), nicknamed as “Hello Work”, provide a vital safety net for jobseekers. PESOs are often the last resort for those who need special assistance, who tend to have difficulties finding employment through private job placement companies.
- PESOs serve employers and jobseekers through a combination of job placement services, employment insurance and employment measures.

## Main activities of PESOs

Eligibility for unemployment benefits must be determined strictly. Through PESOs, the insurer (the national government) directly provides job placement services so that it can best determine whether the claimant is actively seeking a job.

### Job Placement

Job placement, Vocational counseling, Developing job opportunities by visiting local firms

Job matching services are most effective when jobseeker assistance is combined with guidance for employers, or through team effort with other authorities, etc.

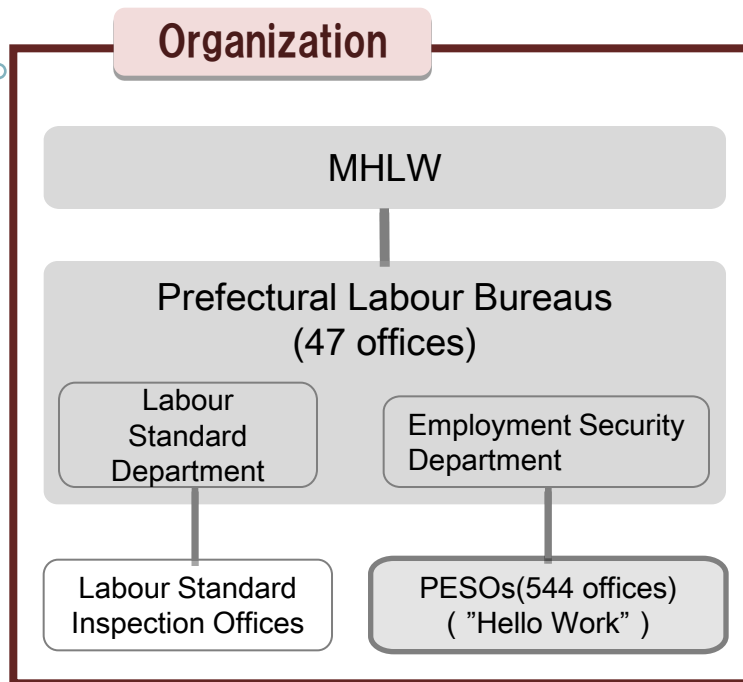
### Employment Insurance / Support for jobseekers

- unemployment verification and providing unemployment benefits
- Sending jobseekers to vocational training, providing vocational training benefits to jobseekers, etc.

### Employment Measures

- Guidance for employers on legal employment rate for persons with disabilities
- Guidance for employers on obligations to maintain older employees
- Assistance for improving Employment Management system, etc.

# Public Employment Security Organization

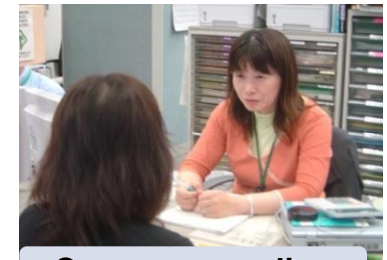


\*1 : Number of PESOs (nationwide)  
544 offices  
(436 main offices, 95 branch offices, 13 small offices)

\*2 : Staff  
number of regular staff: 11,140 persons  
number of non-regular staff: 16,737 persons



Job search



Career counseling

## Advantages of a nationwide network organization

- As a nationwide network, PESOs are capable of tackling problems that need immediate response in a uniform manner throughout Japan.
  - ex.) In response to a rapid increase of job seekers after the world economic crisis, MHLW directed all Labour bureaus and PESOs to develop job opportunities for jobseekers.
    - As a result, in FY2011, PESOs were able to develop 1,834 thousand job opportunities by proactively contacting employers in each local area.

# Outcomes of Public Employment Security Offices

- Around 170 thousand people visit PESOs daily. PESOs are one of the most familiar administrative offices for people in Japan.
- The Government of Japan has been radically reinforcing employment services for those who need special support, such as young people, mothers with young children, people with disabilities, and those who receive public assistance.

## Outcomes, FY2013

- Number of new jobseekers  
(including both full and part time)  
6,200 thousand persons
- Number of new job openings  
(including both full and part time)  
8,522 thousand  
\* 96% of full-time openings are submitted  
by small and medium-sized enterprises
- Number of job placements (including part time)  
1,895 thousand
- Number of recipients of employment insurance  
benefit  
1,666 thousand persons

## Rapid increase in the number of job placements

