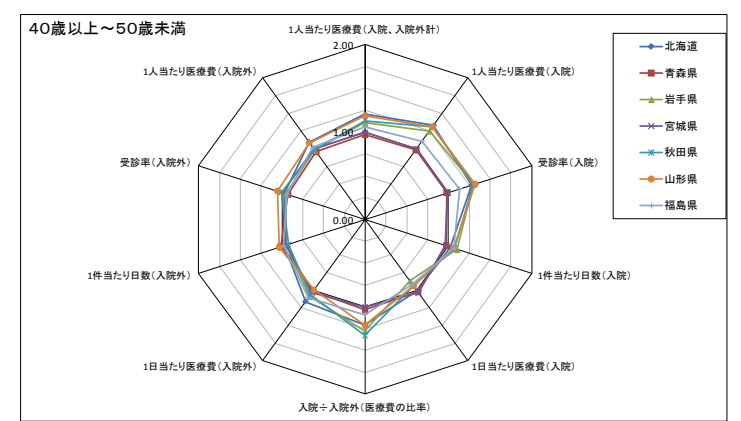
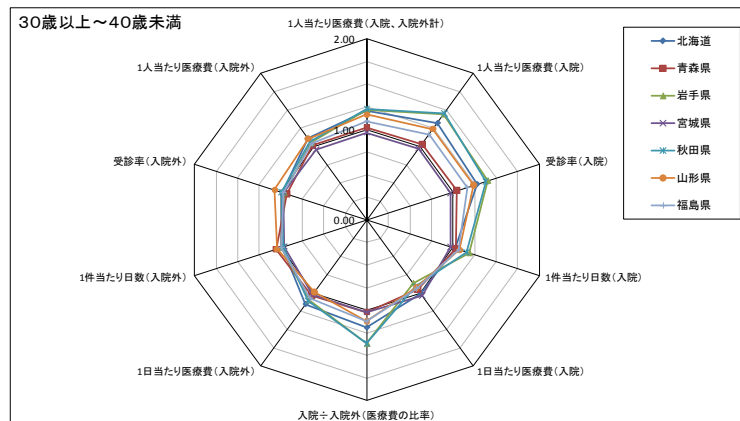
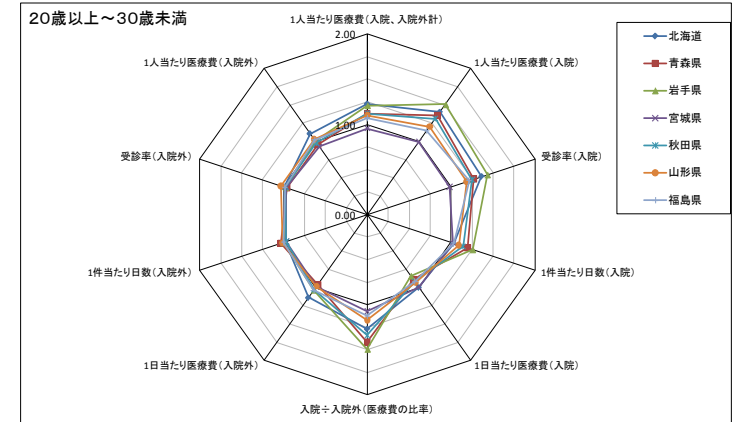
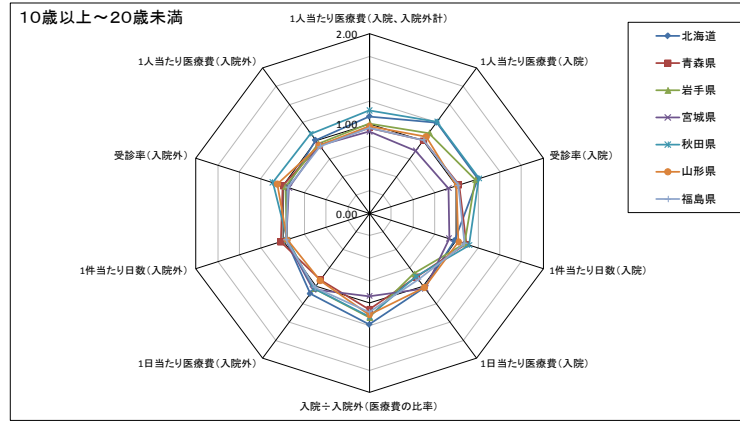
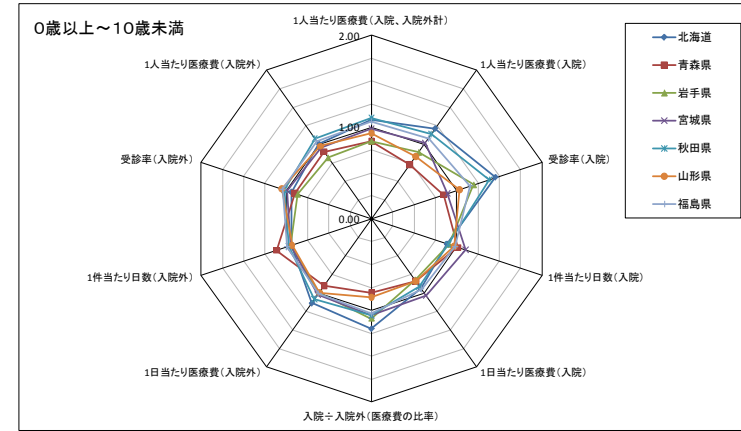
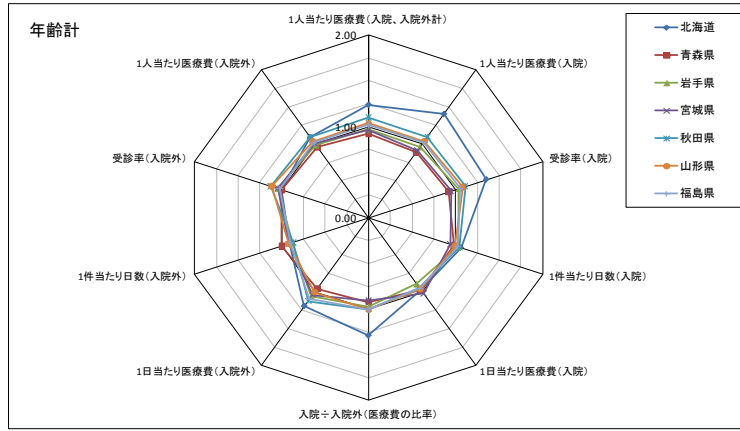


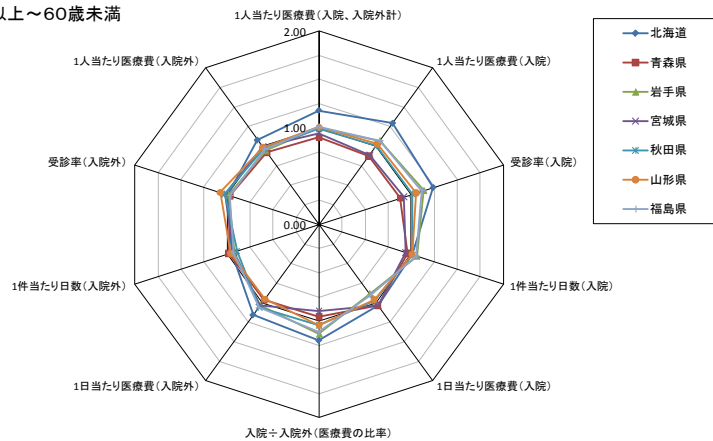
# (参考2) 医療費に関するレーダーチャート(市町村国民健康保険+後期高齢者医療制度)

※ 全国計を1としている。

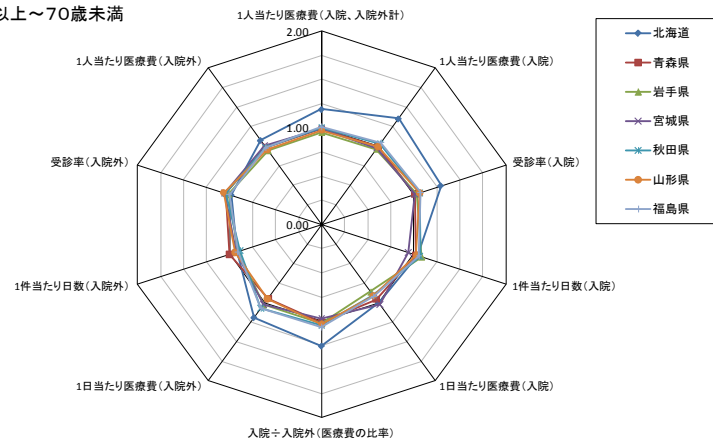
## ① 北海道～東北地方



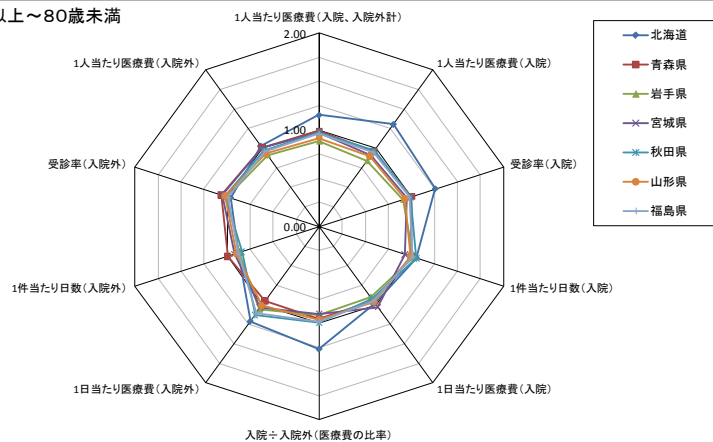
### 50歳以上～60歳未満



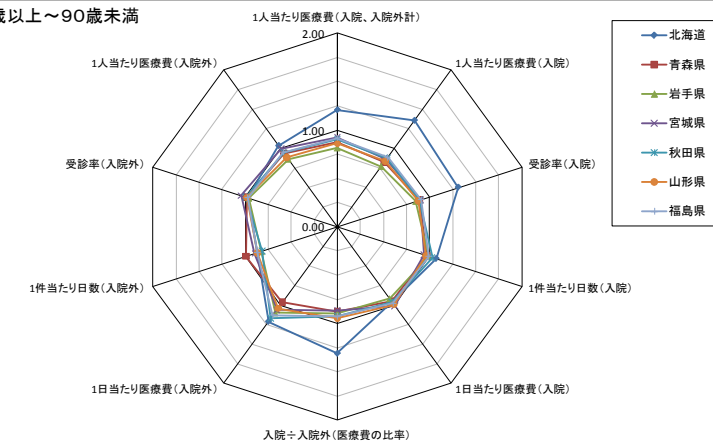
### 60歳以上～70歳未満



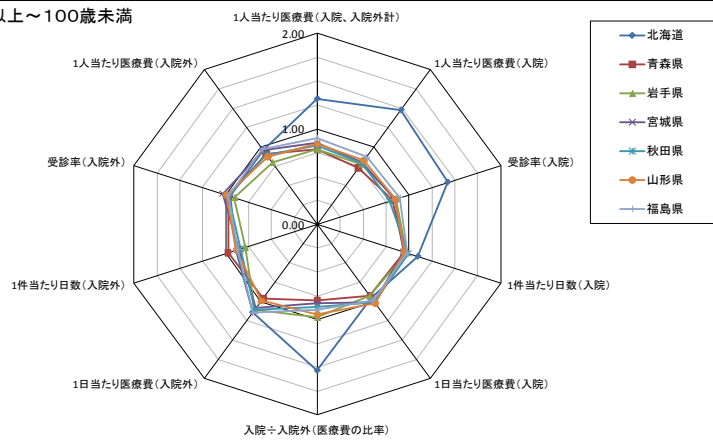
### 70歳以上～80歳未満



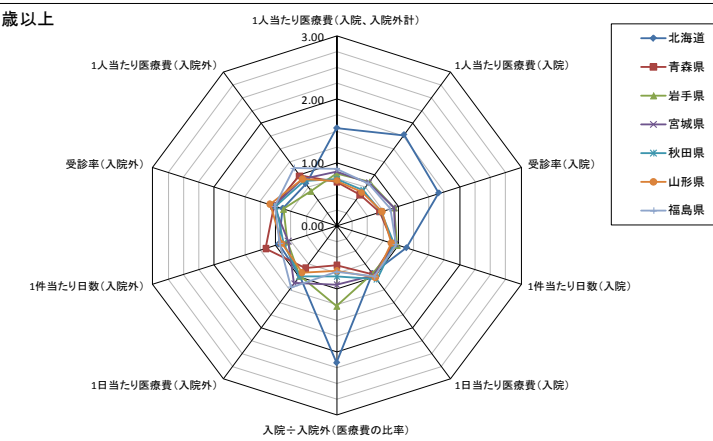
### 80歳以上～90歳未満



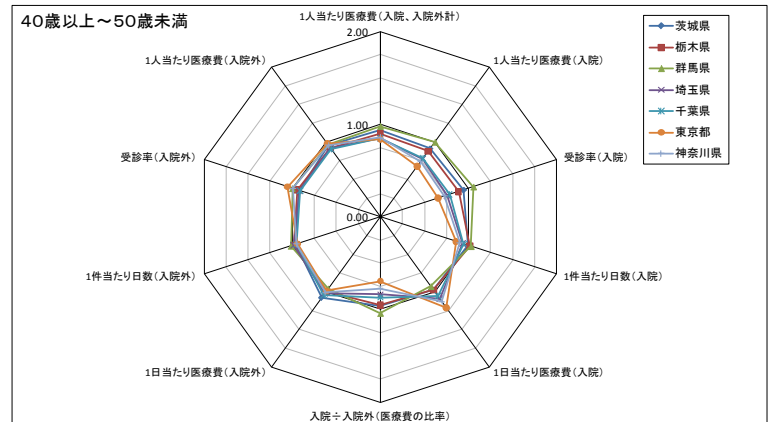
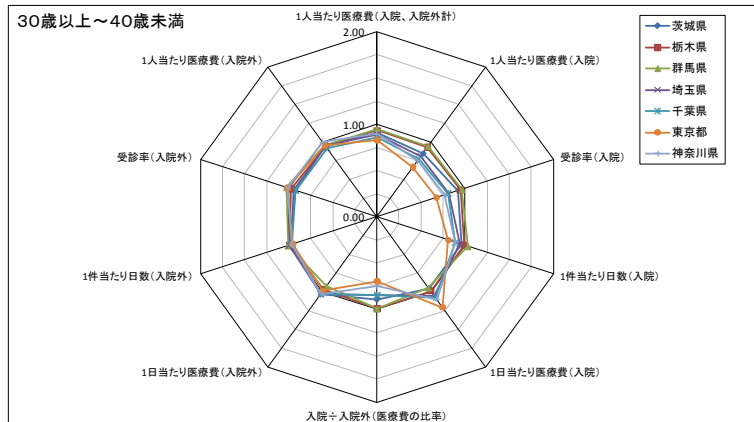
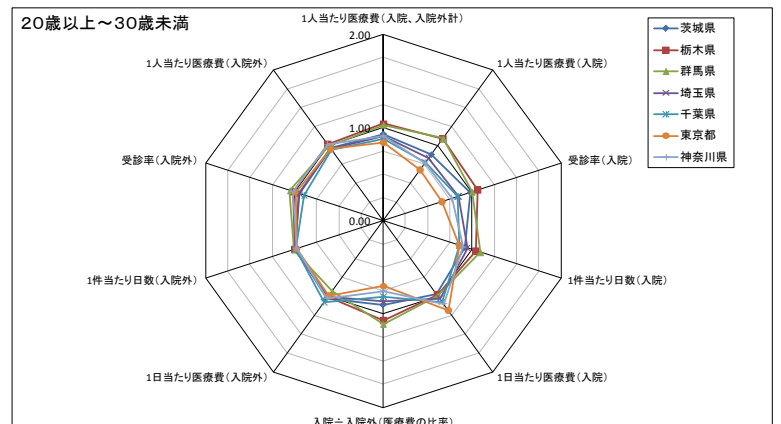
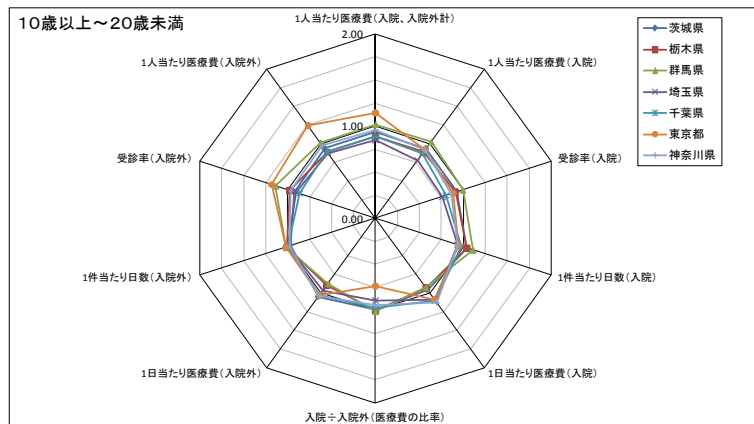
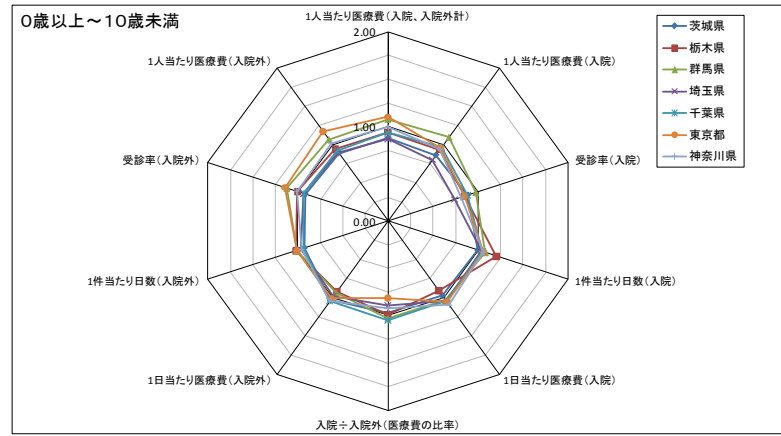
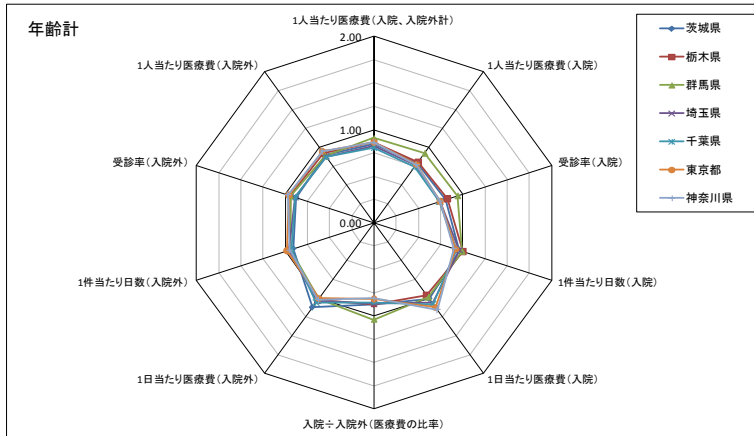
### 90歳以上～100歳未満

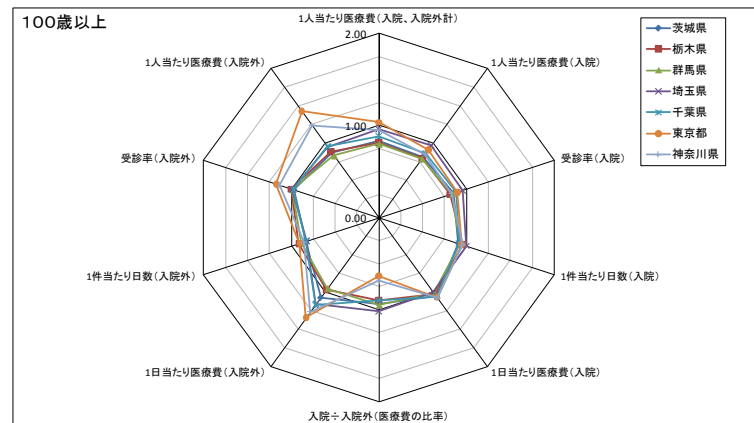
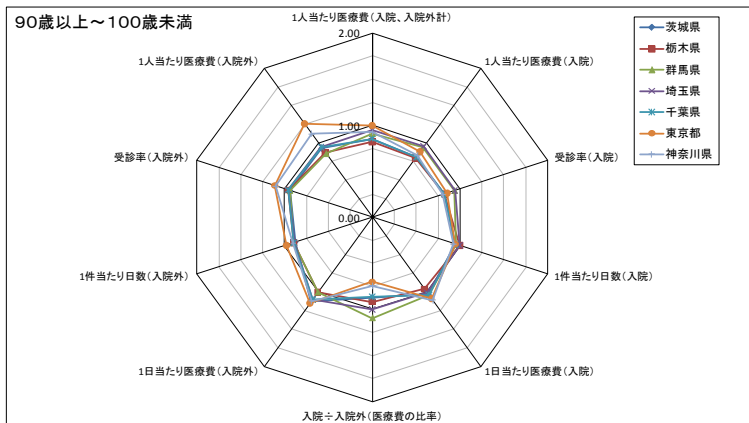
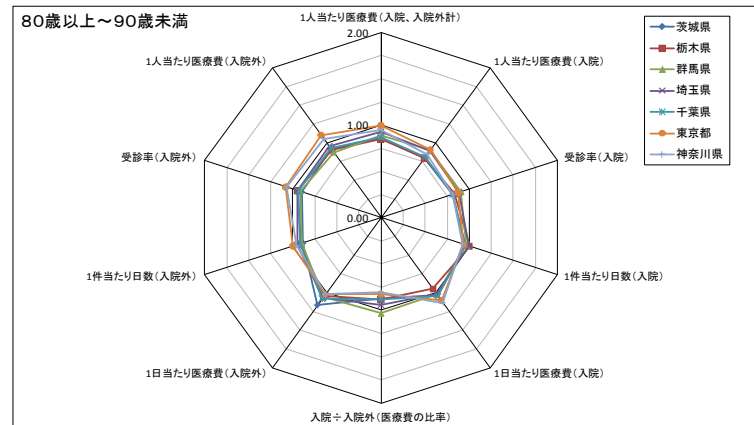
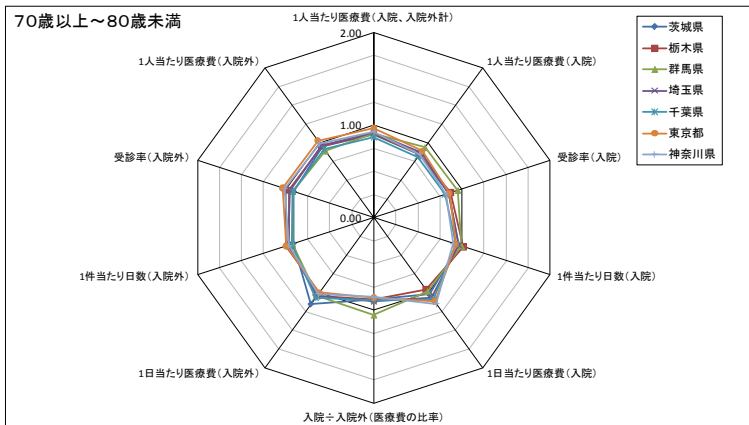
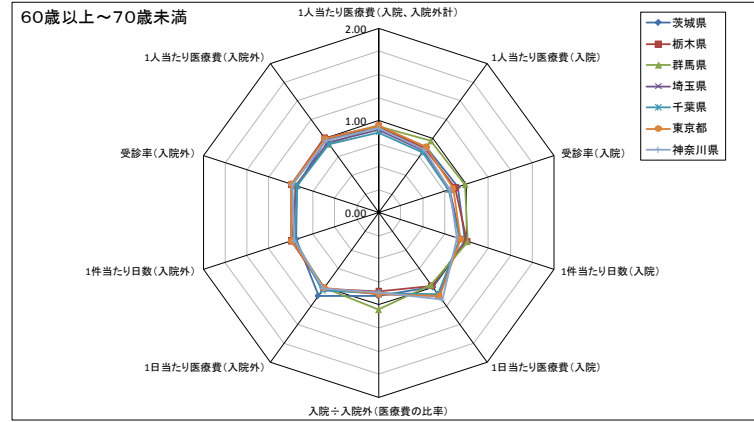
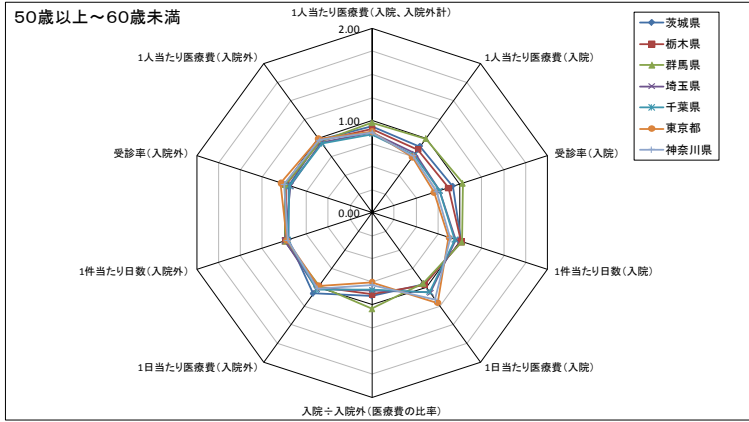


### 100歳以上

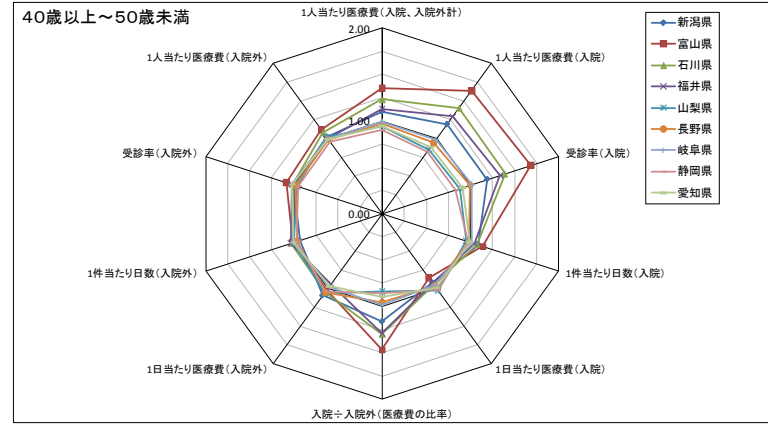
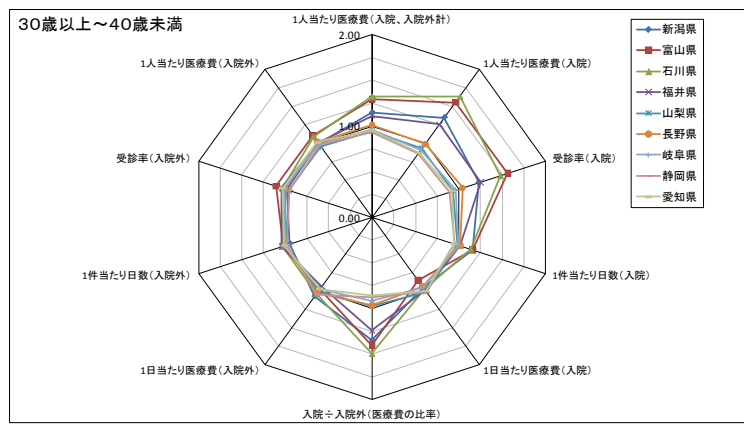
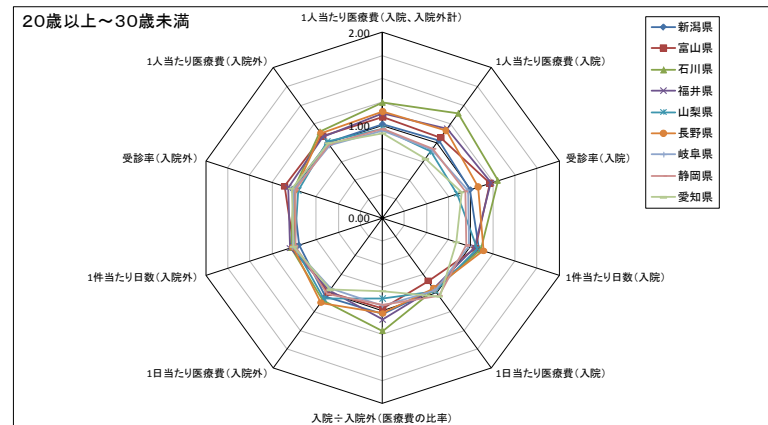
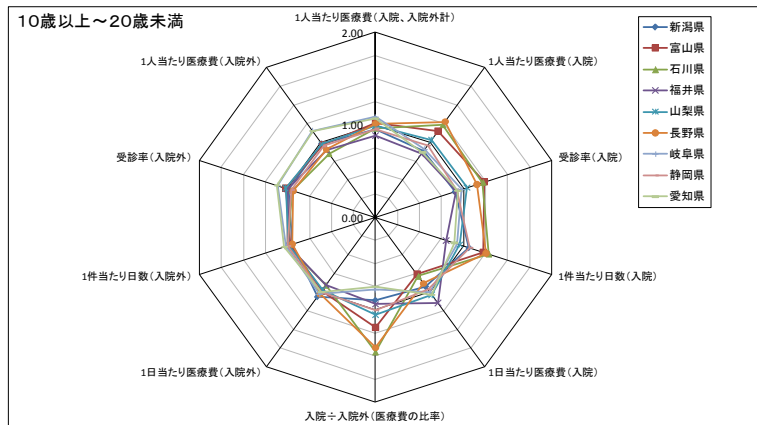
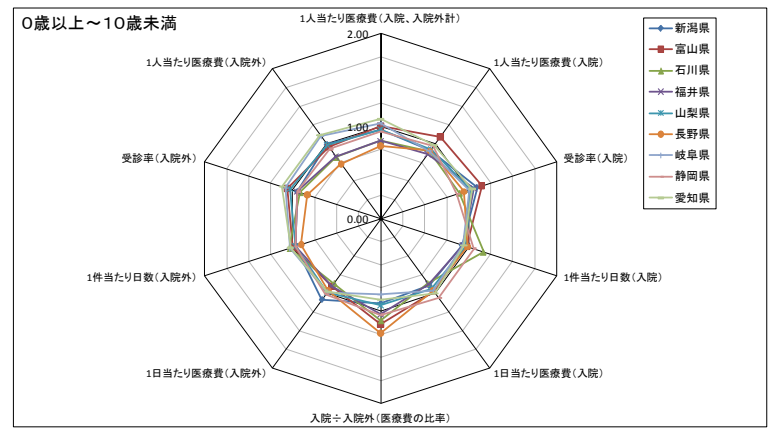
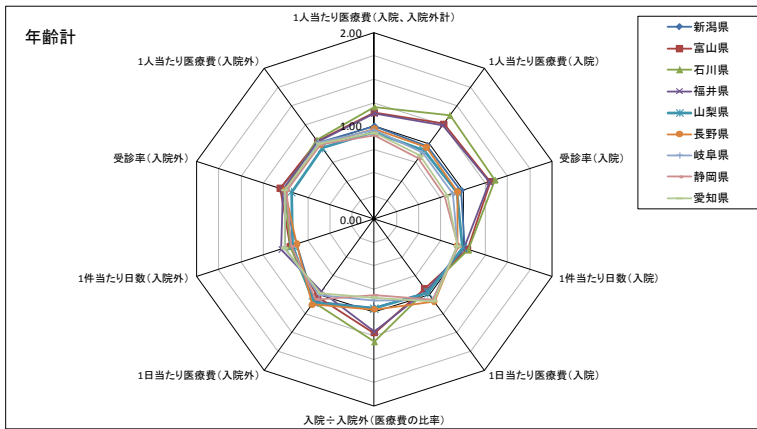


## ② 関東地方

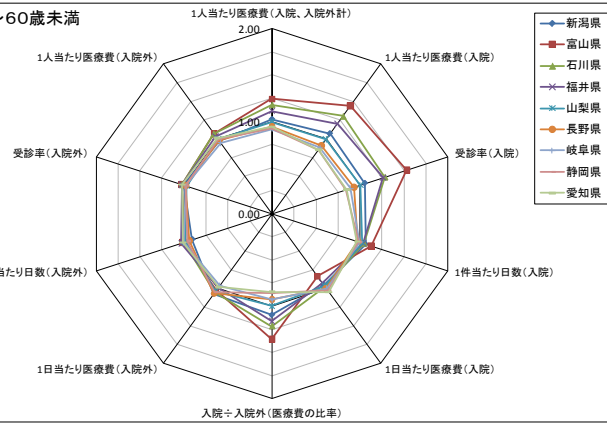




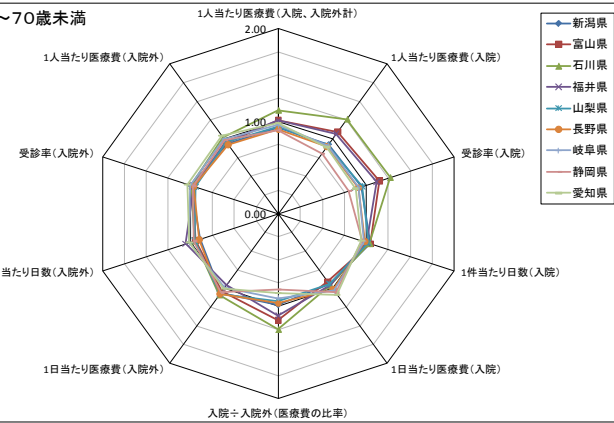
### ③ 中部地方



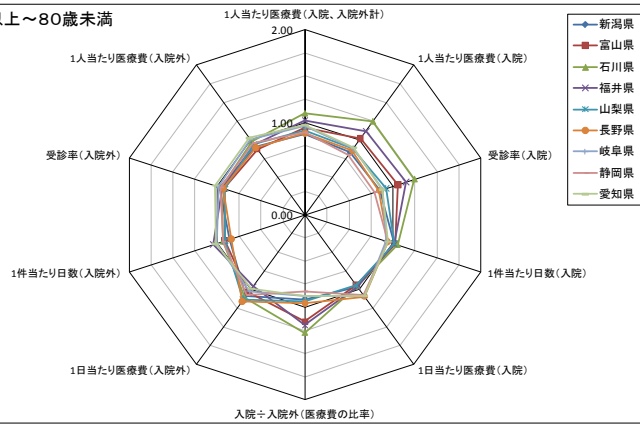
50歳以上～60歳未満



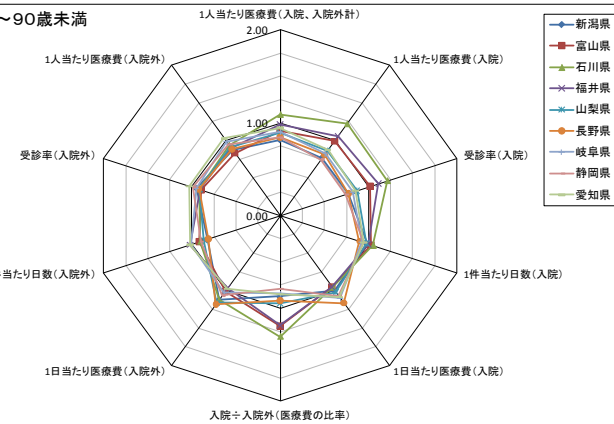
60歳以上～70歳未満



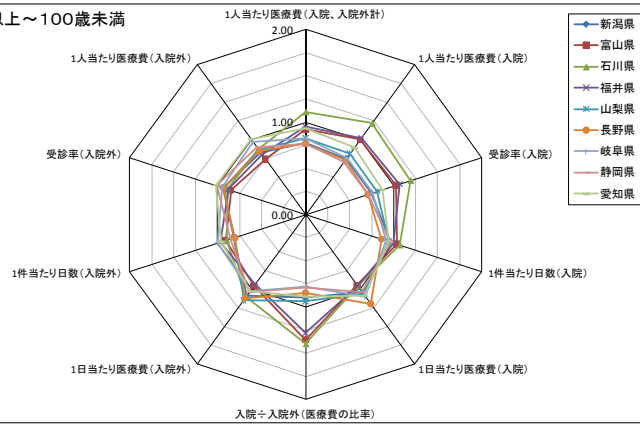
70歳以上～80歳未満



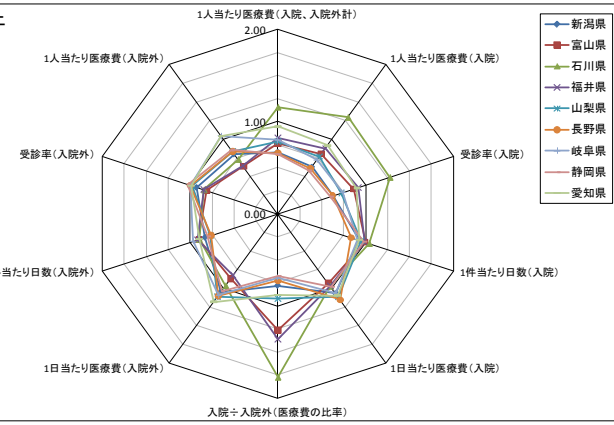
80歳以上～90歳未満



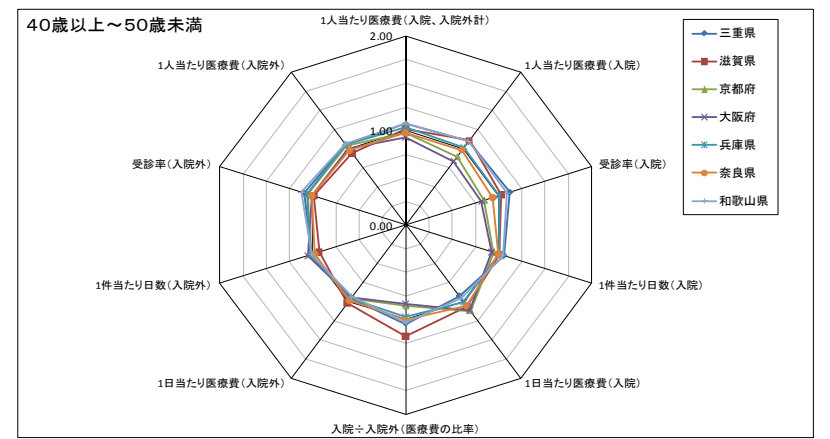
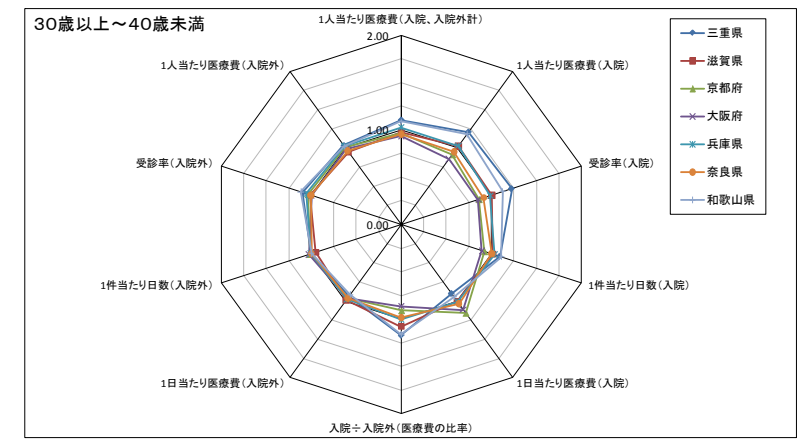
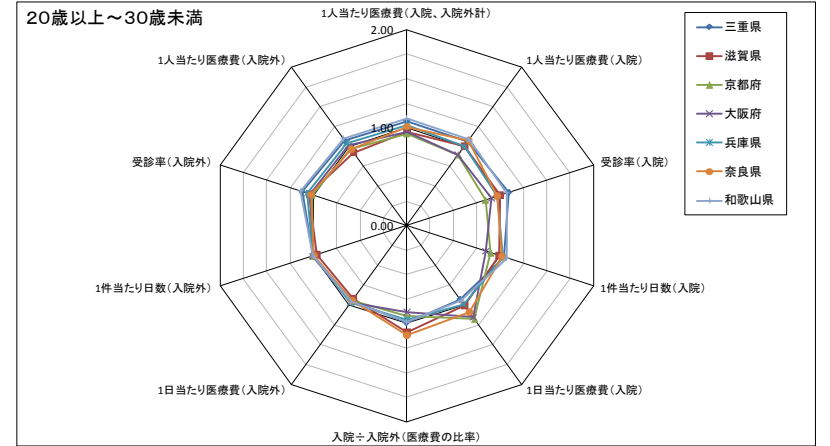
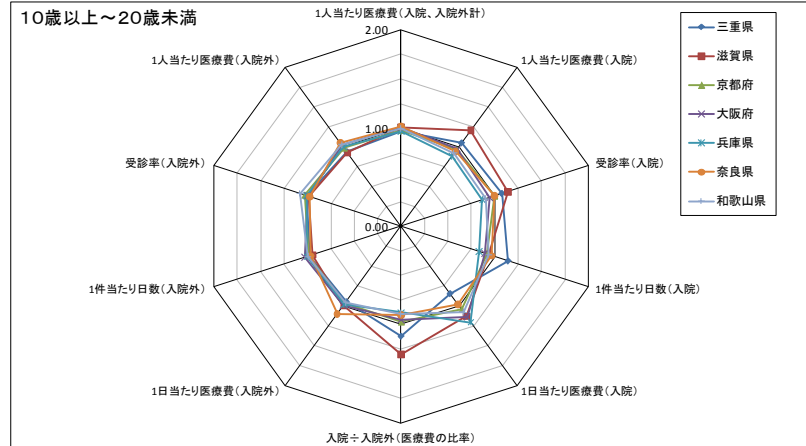
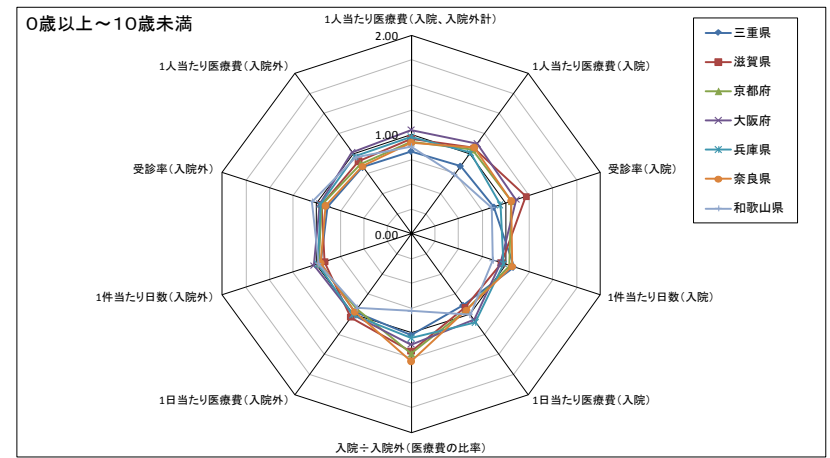
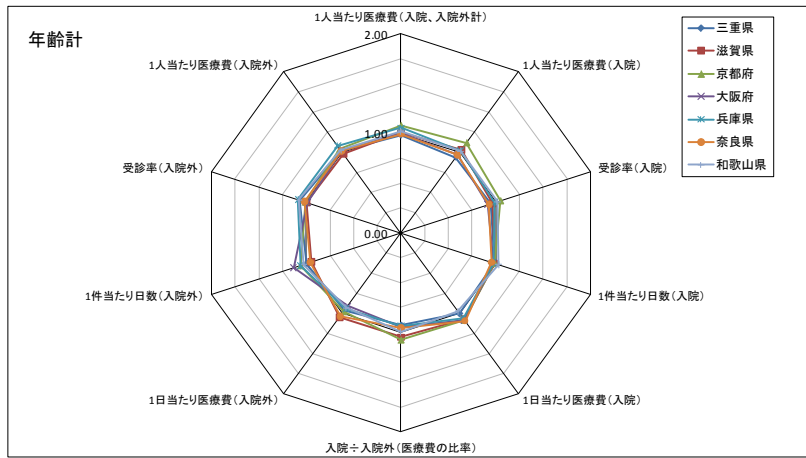
90歳以上～100歳未満



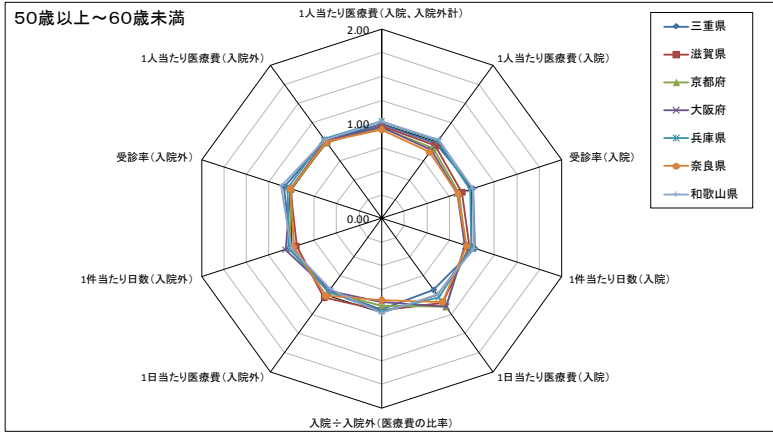
100歳以上



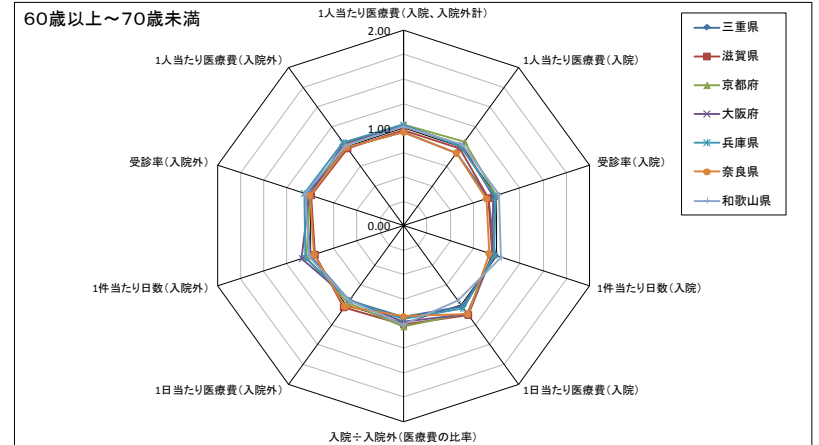
# ④ 近畿地方



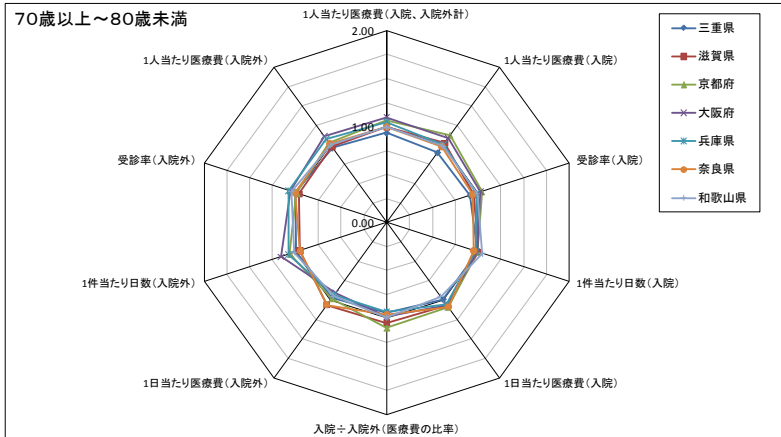
50歳以上～60歳未満



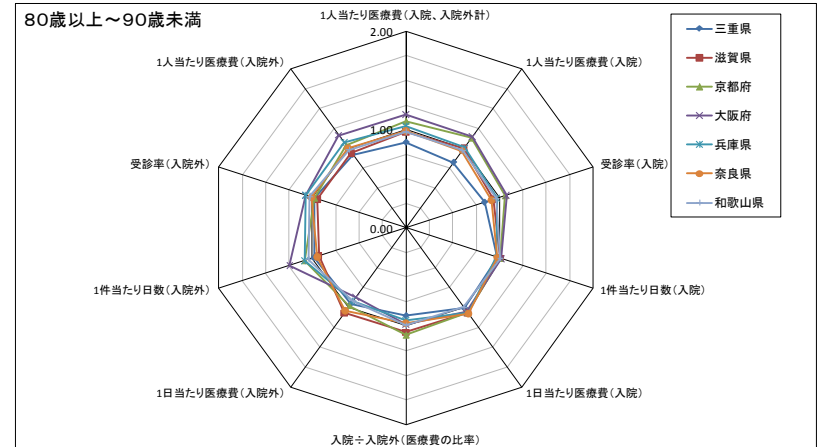
60歳以上～70歳未満



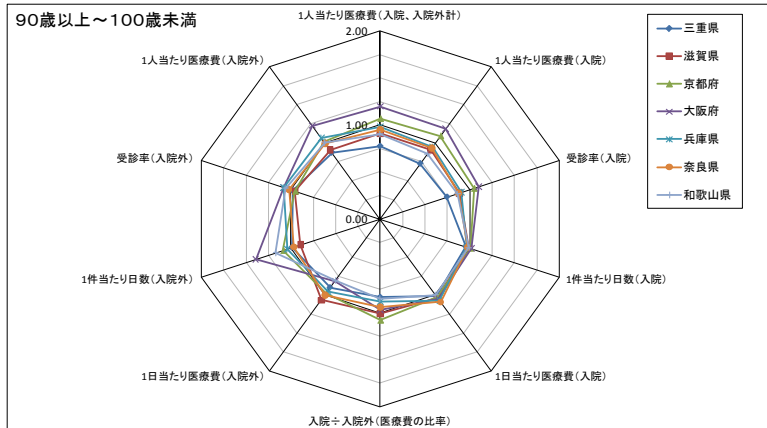
70歳以上～80歳未満



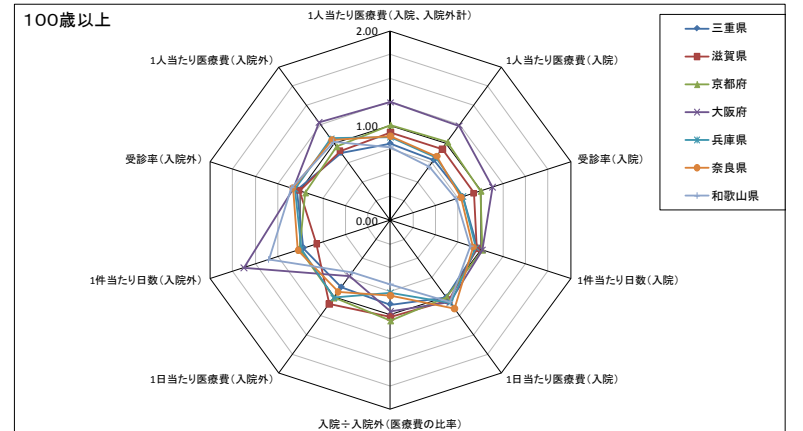
80歳以上～90歳未満



90歳以上～100歳未満

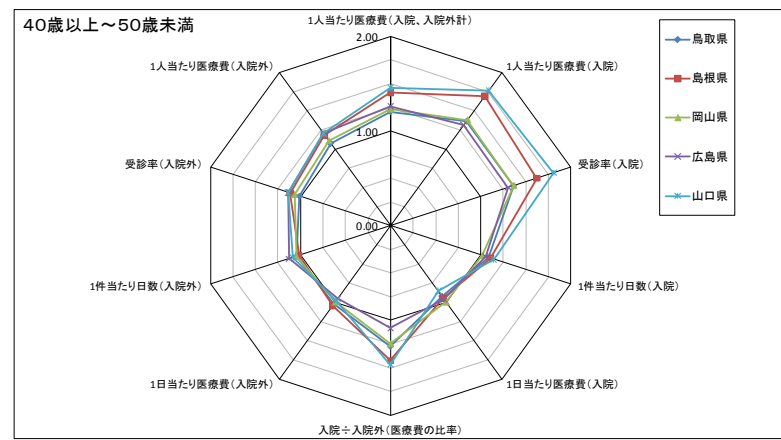
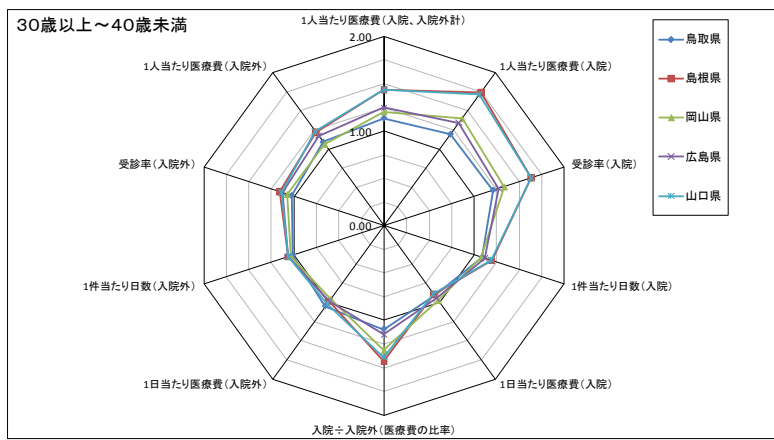
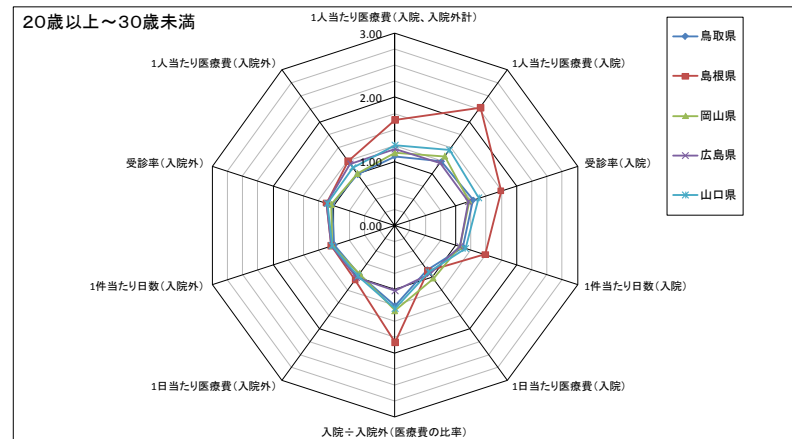
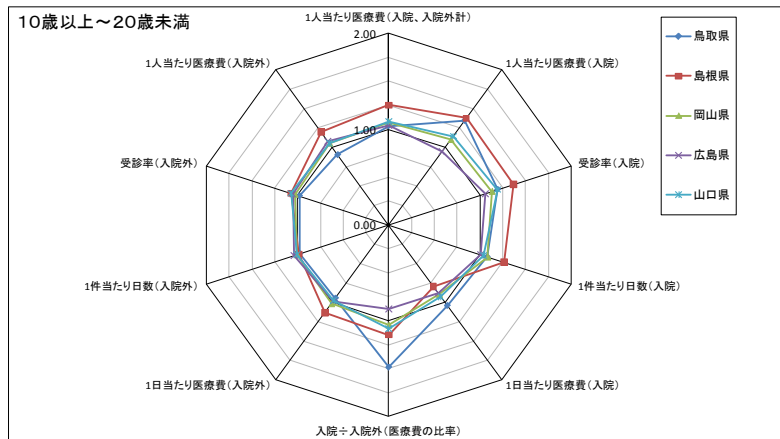
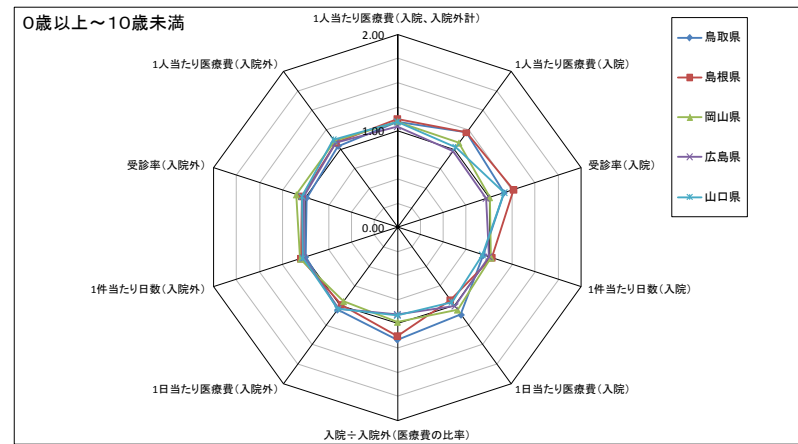
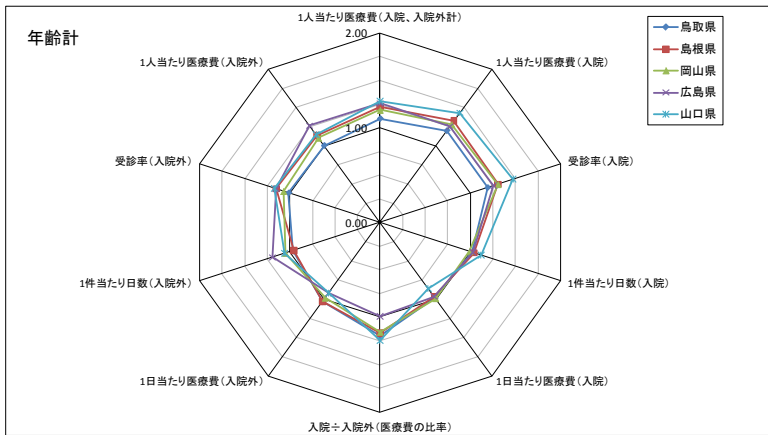


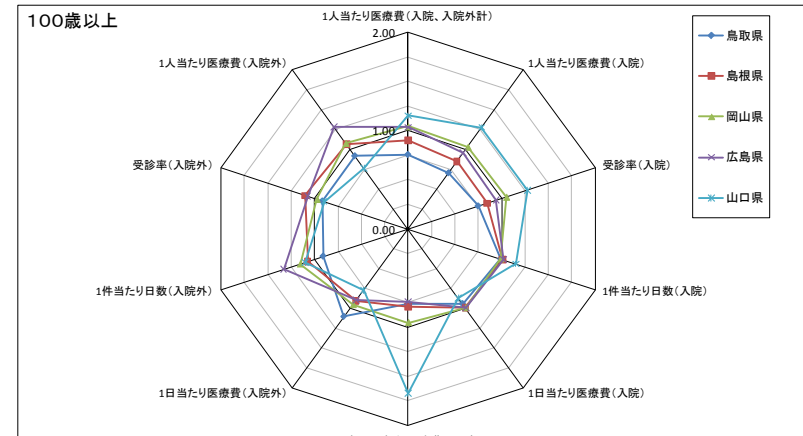
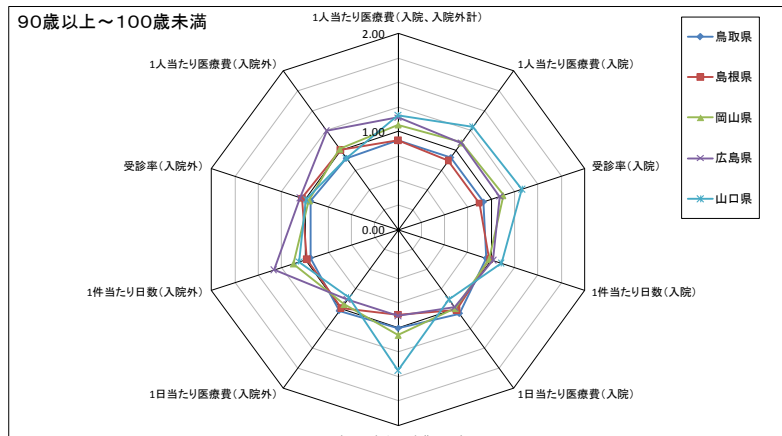
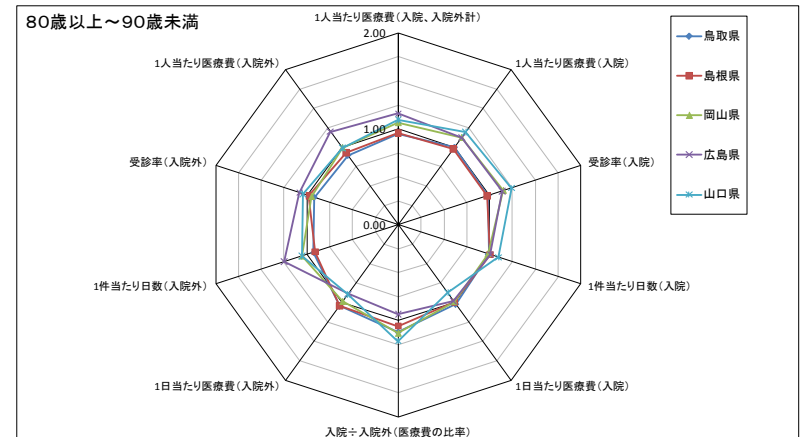
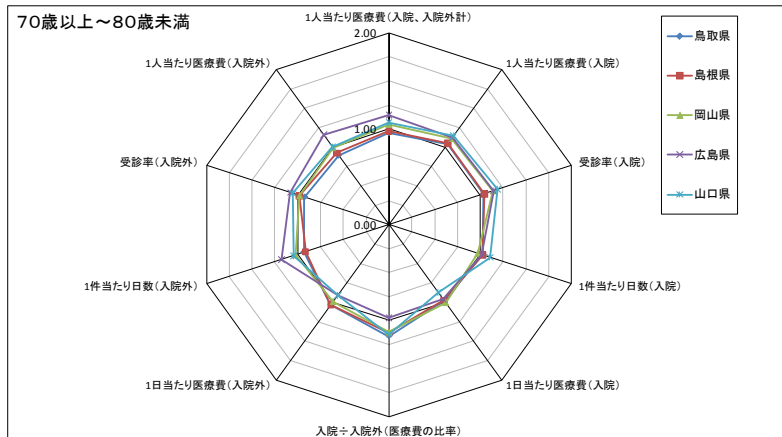
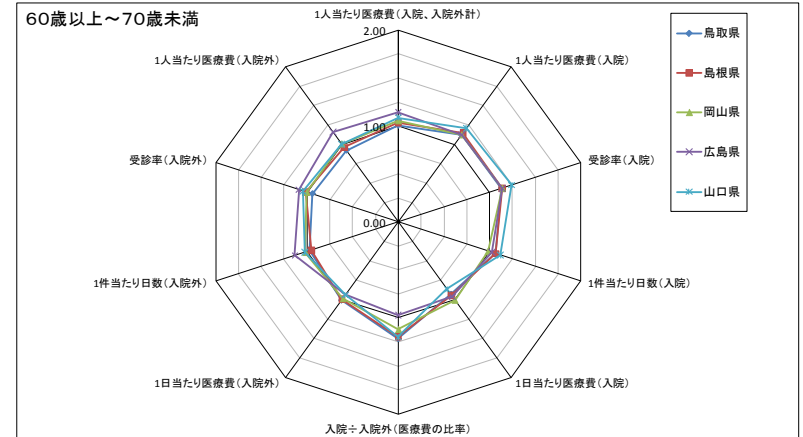
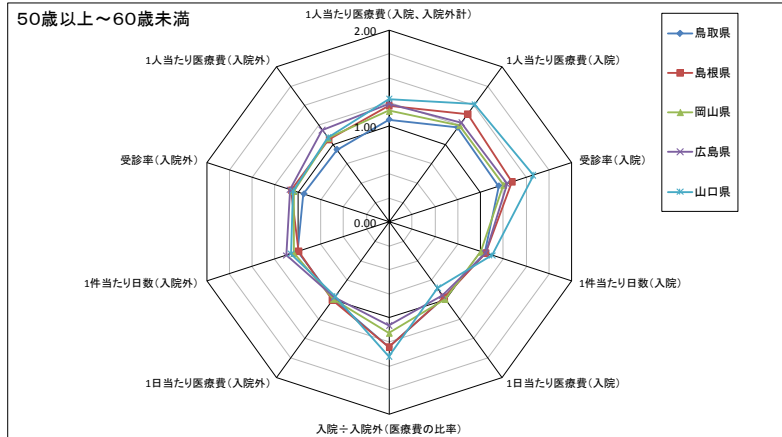
100歳以上



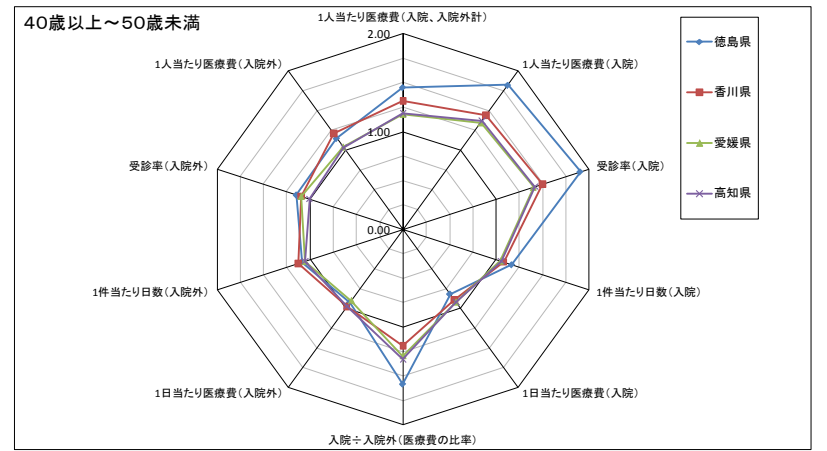
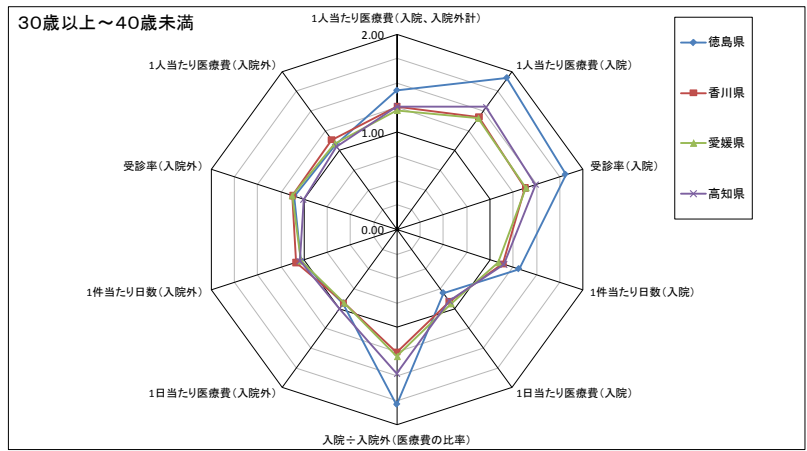
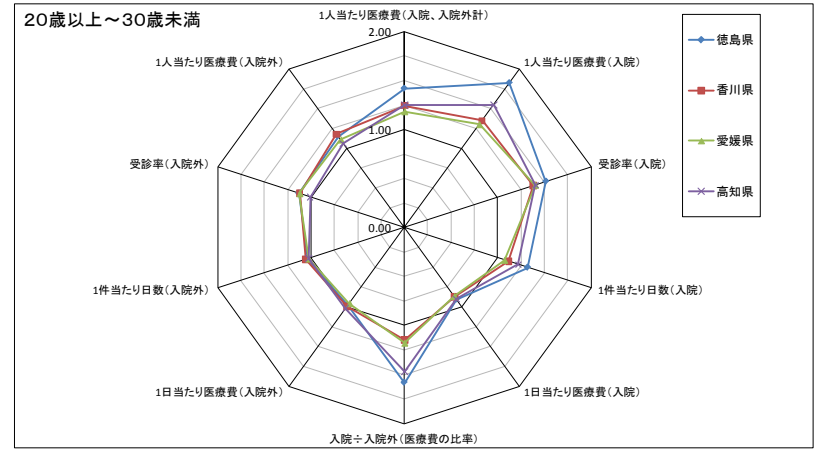
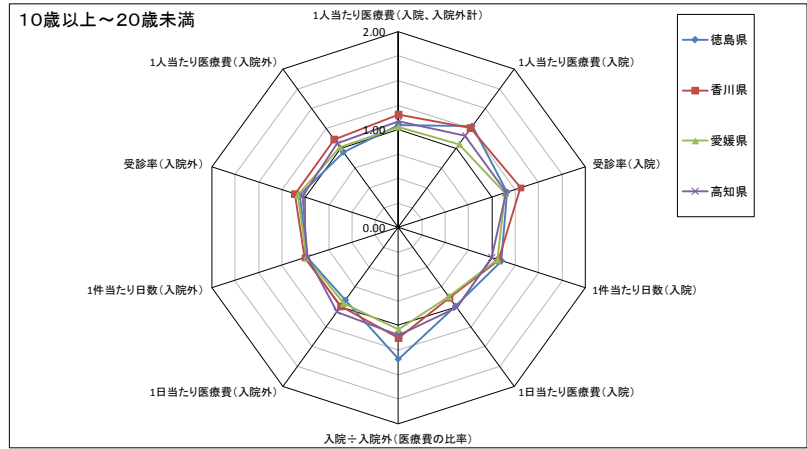
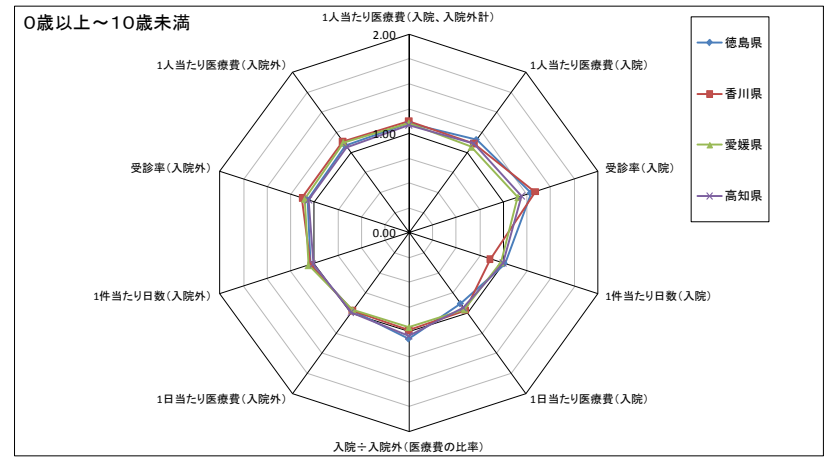
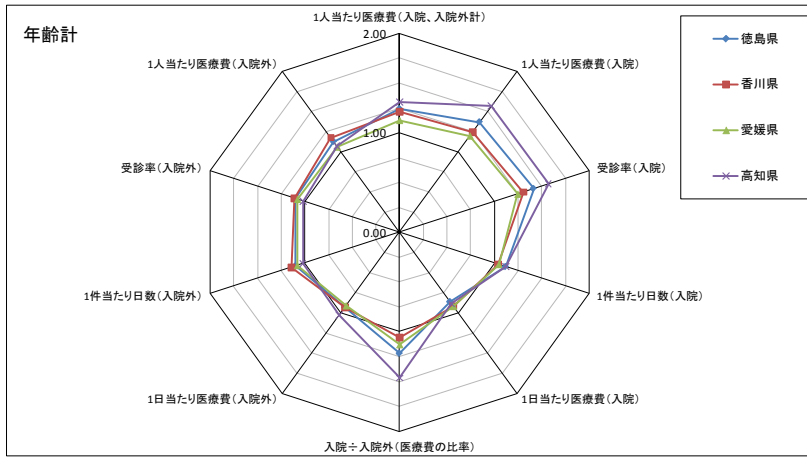


# ⑤ 中国地方

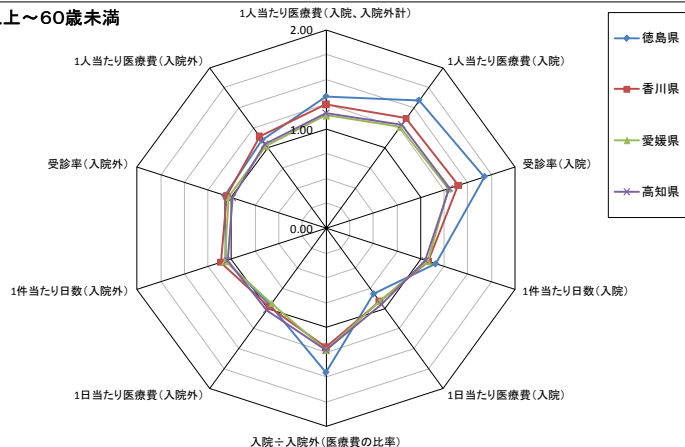




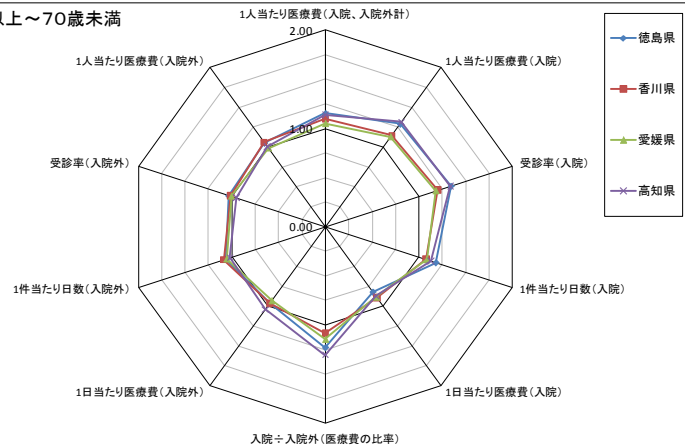
# ⑥ 四国地方



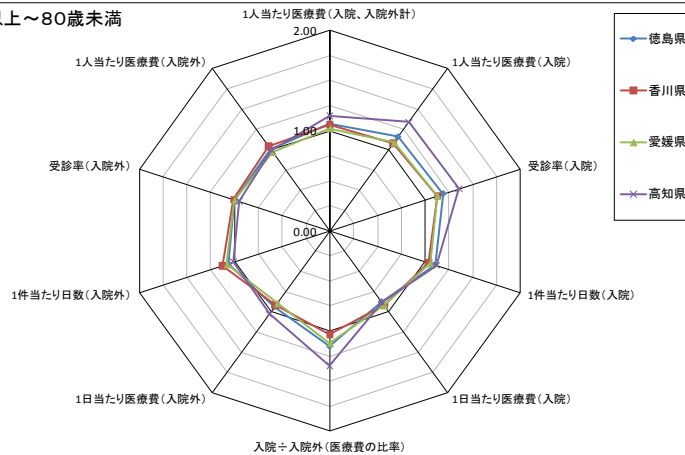
### 50歳以上～60歳未満



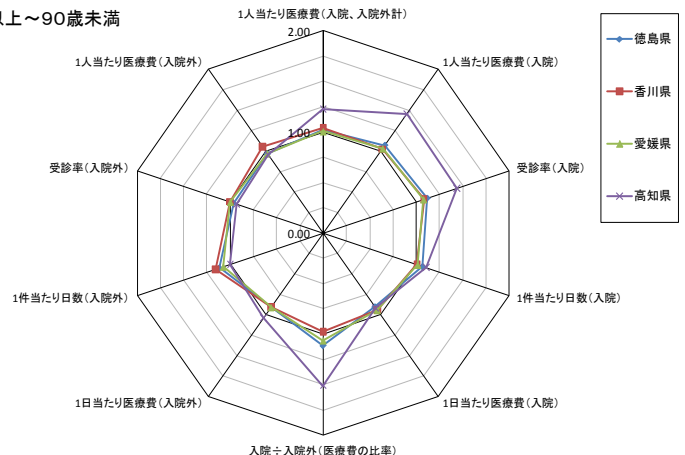
### 60歳以上～70歳未満



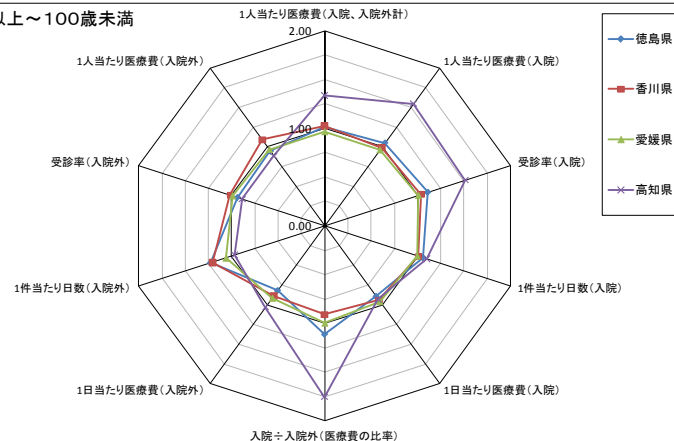
### 70歳以上～80歳未満



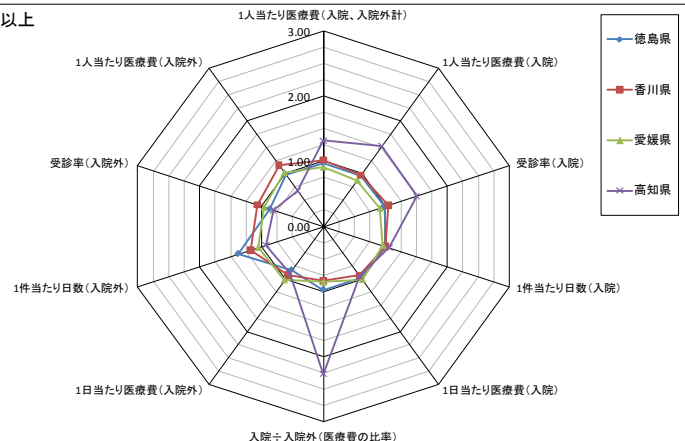
### 80歳以上～90歳未満



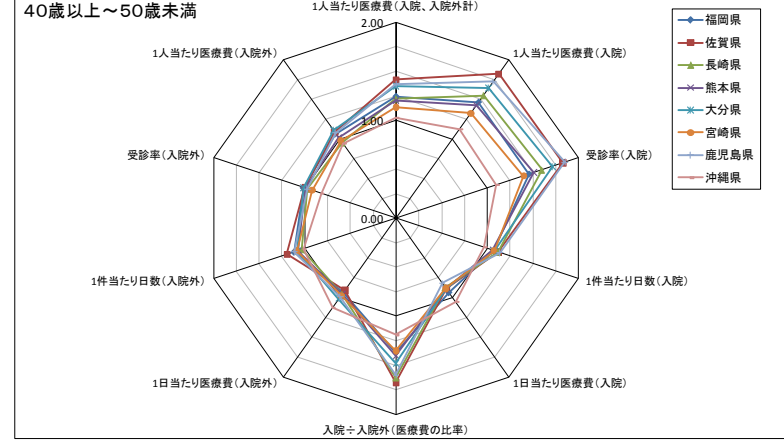
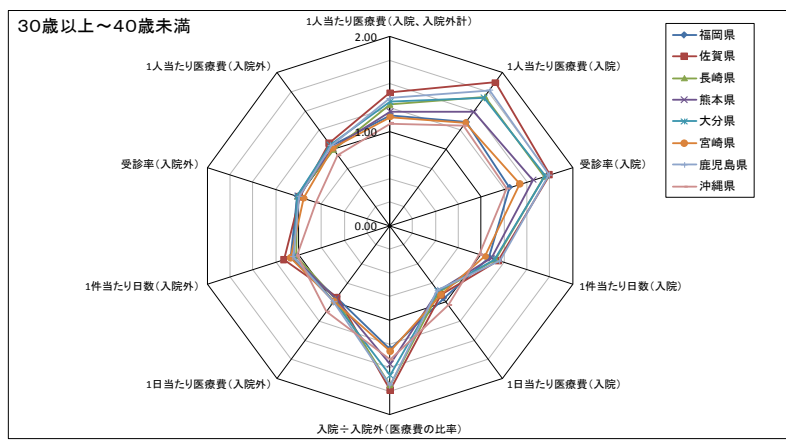
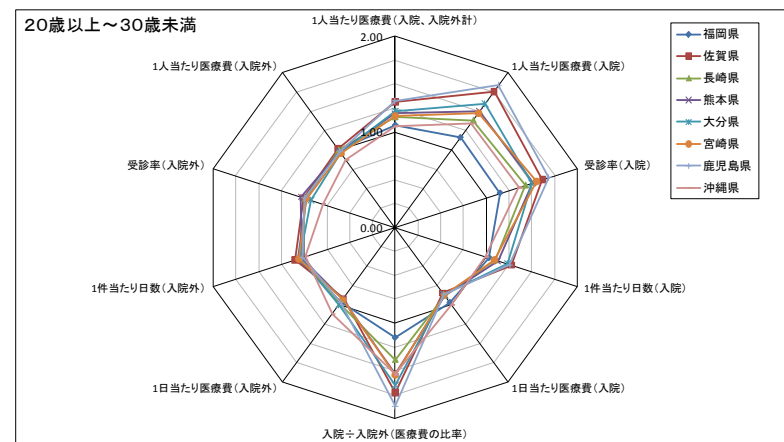
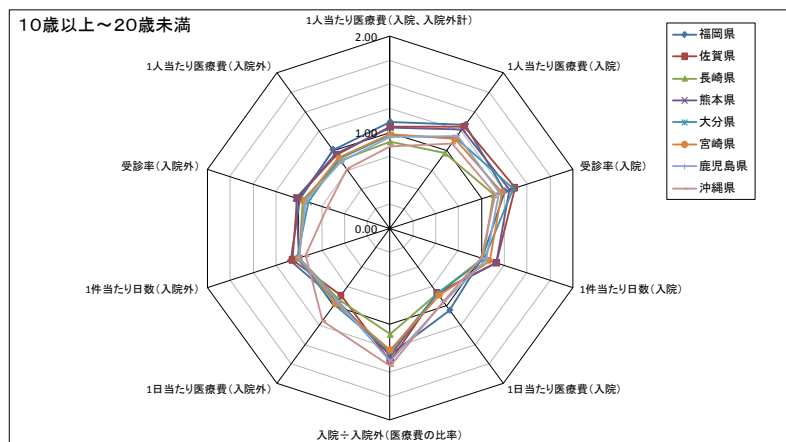
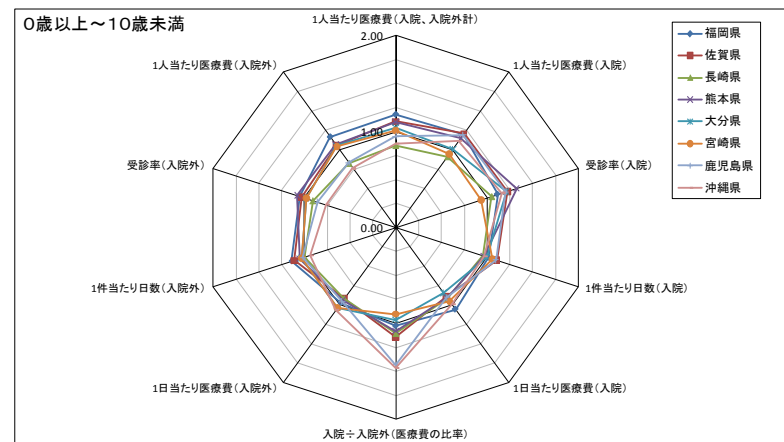
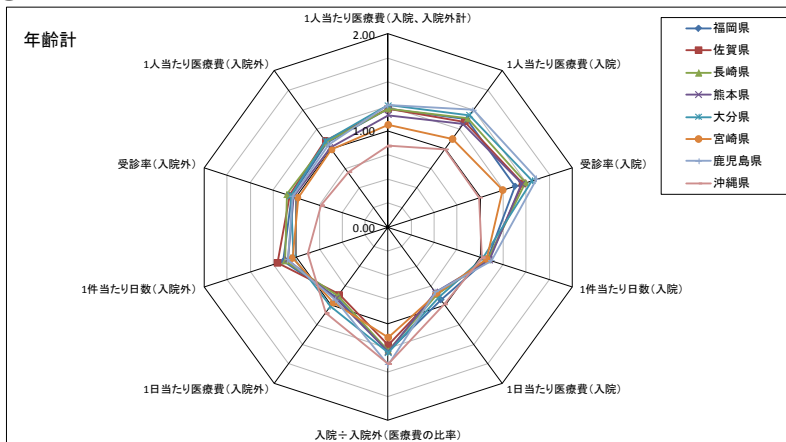
### 90歳以上～100歳未満

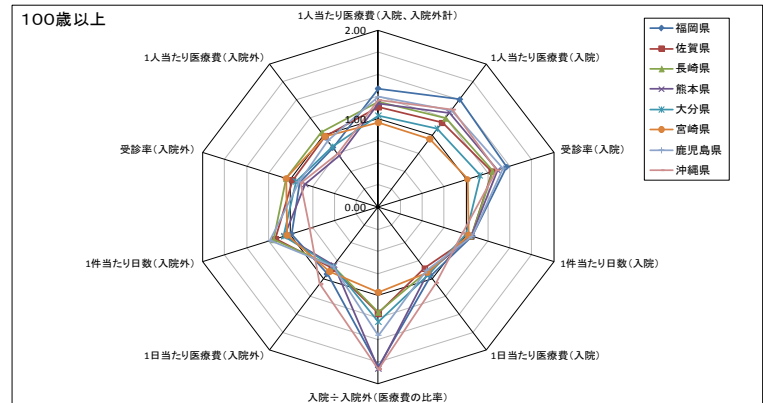
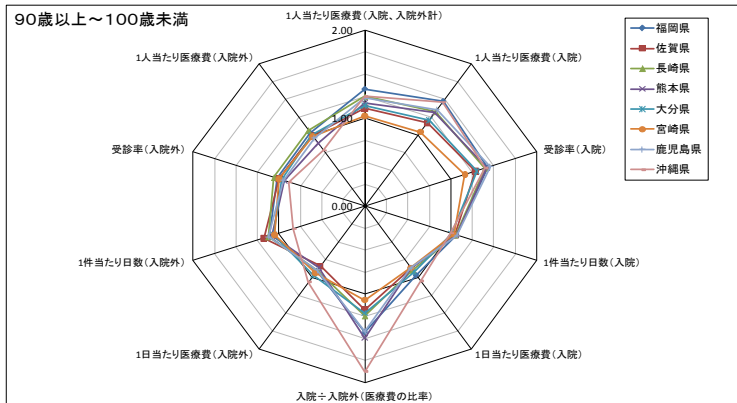
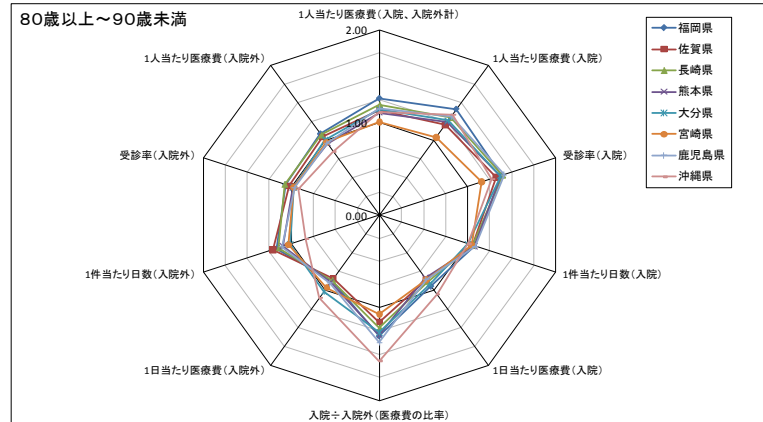
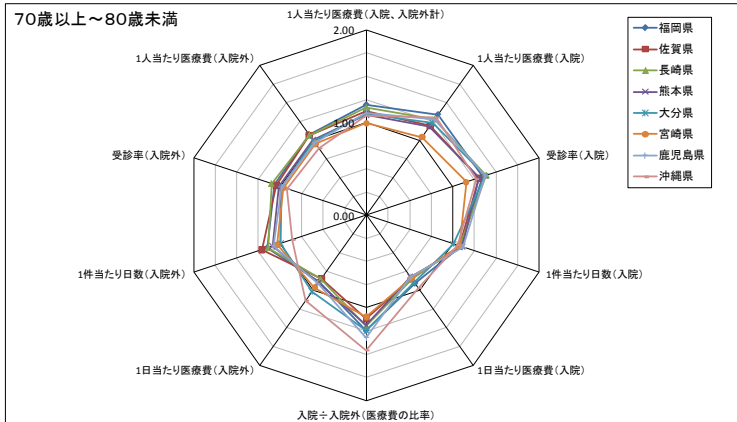
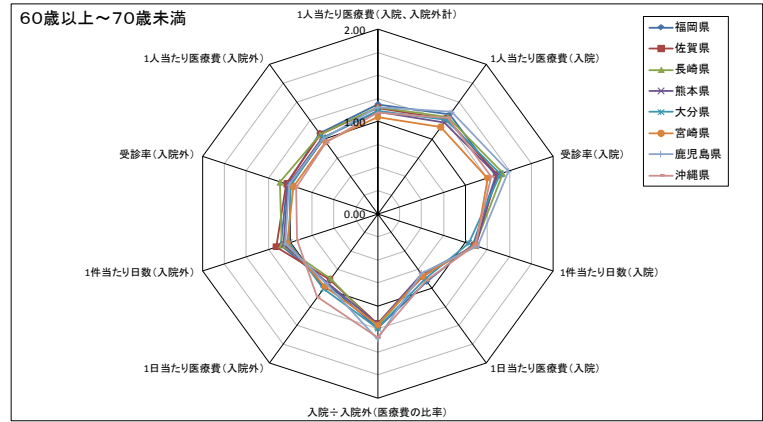
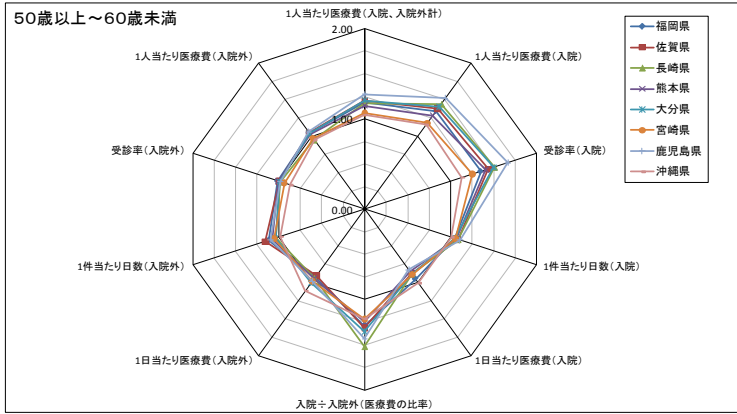


### 100歳以上



# ⑦ 九州地方～沖縄県





### (参考3) 地域差指数の三要素別寄与度について

都道府県別地域差指数の三要素別寄与度は以下の方法で計算した。

$p_i$  : 年齢階級別被保険者数、

$l_{ij}$  : 年齢階級別件数、 $n_{ij}$  : 年齢階級別日数、 $m_{ij}$  : 年齢階級別医療費、

※小文字は保険者別、大文字は全国値を表す

( i : 年齢階級  
j : 診療種別 )

当該地域の地域差指数  $-1 = \sum_i P_i \frac{m_i}{p_i} / \sum_i P_i \frac{M_i}{P_i} - 1 \dots$  (分子をAとおく)

$$\begin{aligned}
 A &= \sum_i P_i \frac{m_i}{p_i} - \sum_i P_i \frac{M_i}{P_i} = \sum_j \left( \sum_i P_i \frac{m_{ij}}{p_i} - \sum_i P_i \frac{M_{ij}}{P_i} \right) \\
 &= \sum_j \left( \sum_i P_i \frac{l_{ij} n_{ij} m_{ij}}{p_i l_{ij} n_{ij}} - \sum_i P_i \frac{L_{ij} N_{ij} M_{ij}}{P_i L_{ij} N_{ij}} \right) \\
 &= \sum_j \left( \sum_i P_i \frac{l_{ij} n_{ij} m_{ij}}{p_i l_{ij} n_{ij}} - \sum_i P_i \frac{l_{ij} n_{ij} M_{ij}}{p_i l_{ij} N_{ij}} + \sum_i P_i \frac{l_{ij} n_{ij} M_{ij}}{p_i l_{ij} N_{ij}} - \sum_i P_i \frac{l_{ij} N_{ij} M_{ij}}{p_i L_{ij} N_{ij}} + \sum_i P_i \frac{l_{ij} N_{ij} M_{ij}}{p_i L_{ij} N_{ij}} - \sum_i P_i \frac{L_{ij} N_{ij} M_{ij}}{P_i L_{ij} N_{ij}} \right) \\
 &= \sum_j \left( \underbrace{\sum_i P_i \frac{l_{ij} n_{ij}}{p_i l_{ij}} \left( \frac{m_{ij}}{n_{ij}} - \frac{M_{ij}}{N_{ij}} \right)}_{\substack{\text{1日あたり医療費} \\ \text{(診療種別 j)}}} + \underbrace{\sum_i P_i \frac{l_{ij}}{p_i} \left( \frac{n_{ij}}{l_{ij}} - \frac{N_{ij}}{L_{ij}} \right) \frac{M_{ij}}{N_{ij}}}_{\substack{\text{1件あたり日数} \\ \text{(診療種別 j)}}} + \underbrace{\sum_i P_i \left( \frac{l_{ij}}{p_i} - \frac{L_{ij}}{P_i} \right) \frac{N_{ij} M_{ij}}{L_{ij} N_{ij}}}_{\substack{\text{受診率} \\ \text{(診療種別 j)}}} \right)
 \end{aligned}$$

※ ここでは上記の算式・計算順により三要素別寄与度を算出しているが、計算の仕方によって結果が若干動くことがあることに留意が必要